

Appendix A

Land Classification Maps

JST Land Classification Key Map



**US Army Corps
of Engineers®**
Savannah District

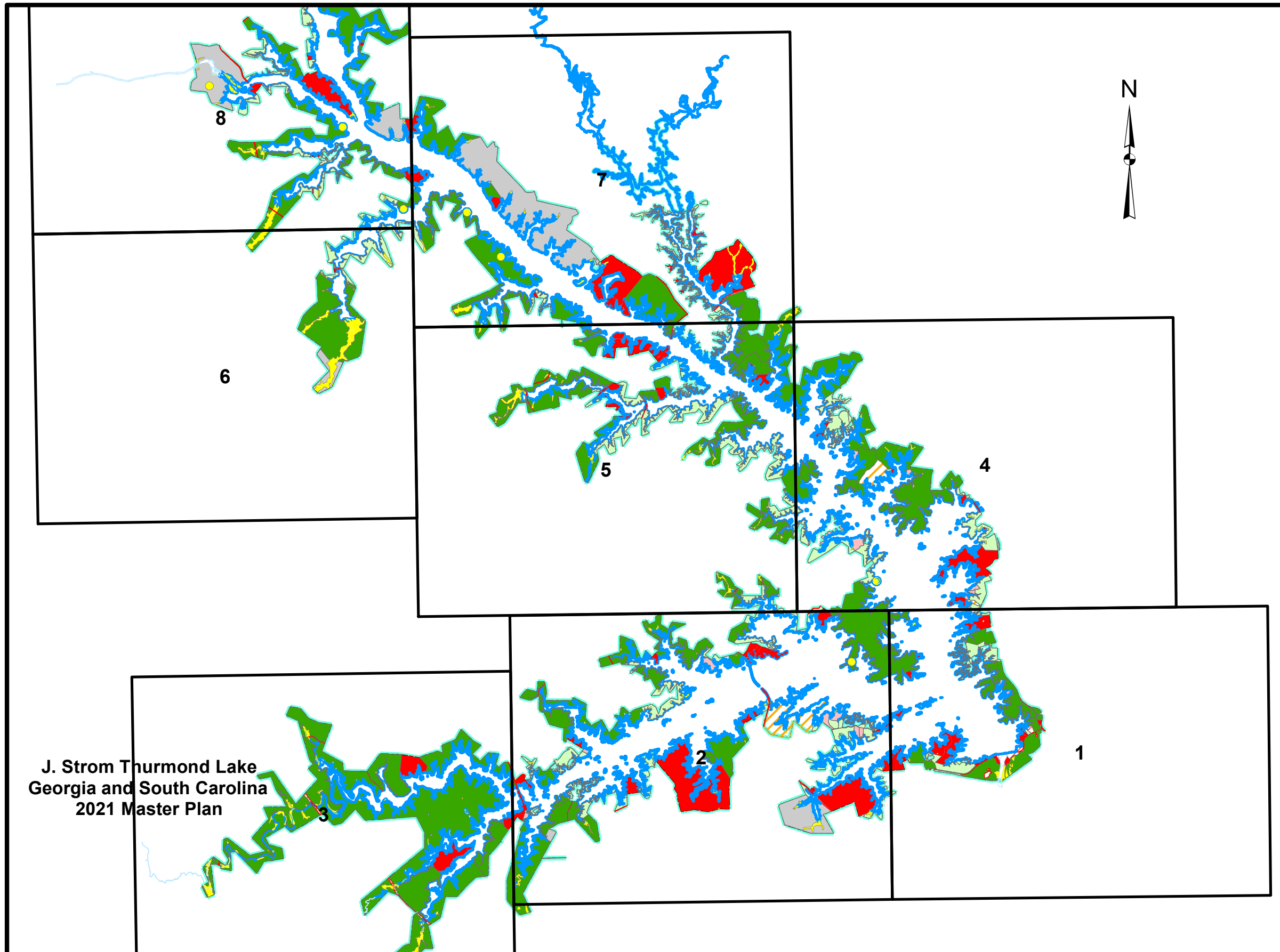


Location Map

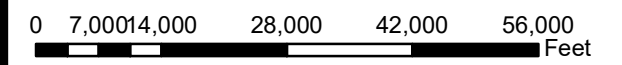
Legend

Land Classification

- Environmentally Sensitive Areas
- High Density Recreation
- Lake
- Low Density Recreation
- Mitigation
- Project Operations
- Recreation - Quasi_Private
- River
- Special Use
- Wildlife Mgt
- Property Line
- Zoning Index



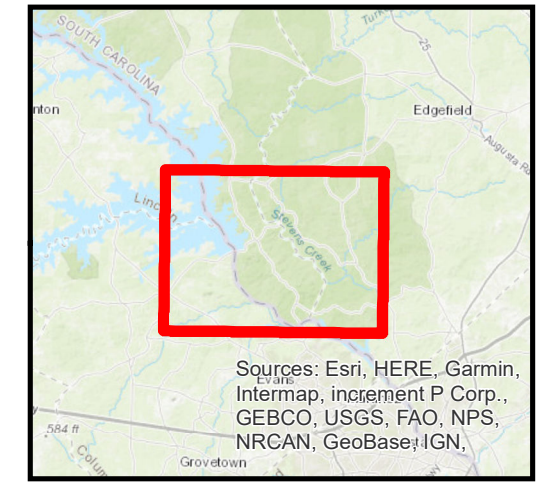
**J. Strom Thurmond Lake
Georgia and South Carolina
2021 Master Plan**



JST Land Classification Maps- Plate 1 of 8

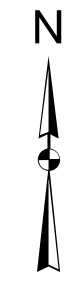
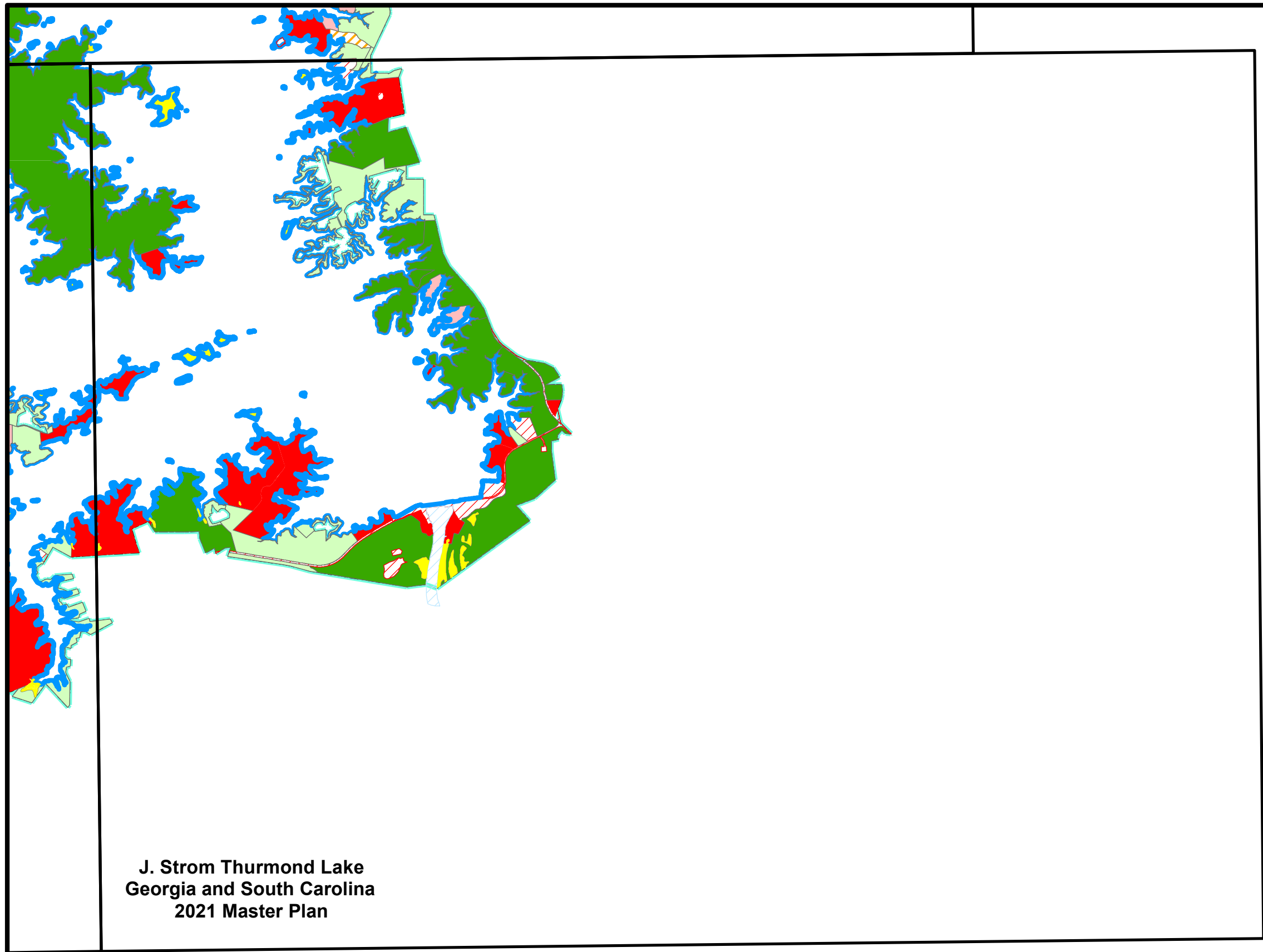


**US Army Corps
of Engineers®**
Savannah District



Location Map

Sources: Esri, HERE, Garmin, Intermap, increment P Corp., GEBCO, USGS, FAO, NPS, NRCAN, GeoBase, IGN,

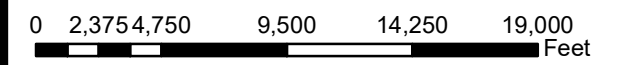


**J. Strom Thurmond Lake
Georgia and South Carolina
2021 Master Plan**

Legend

Land Classification

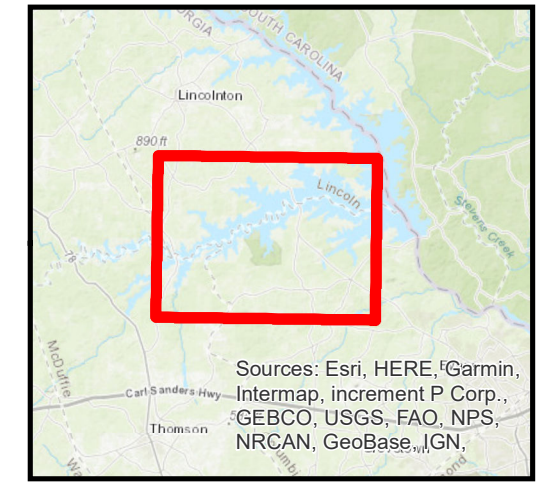
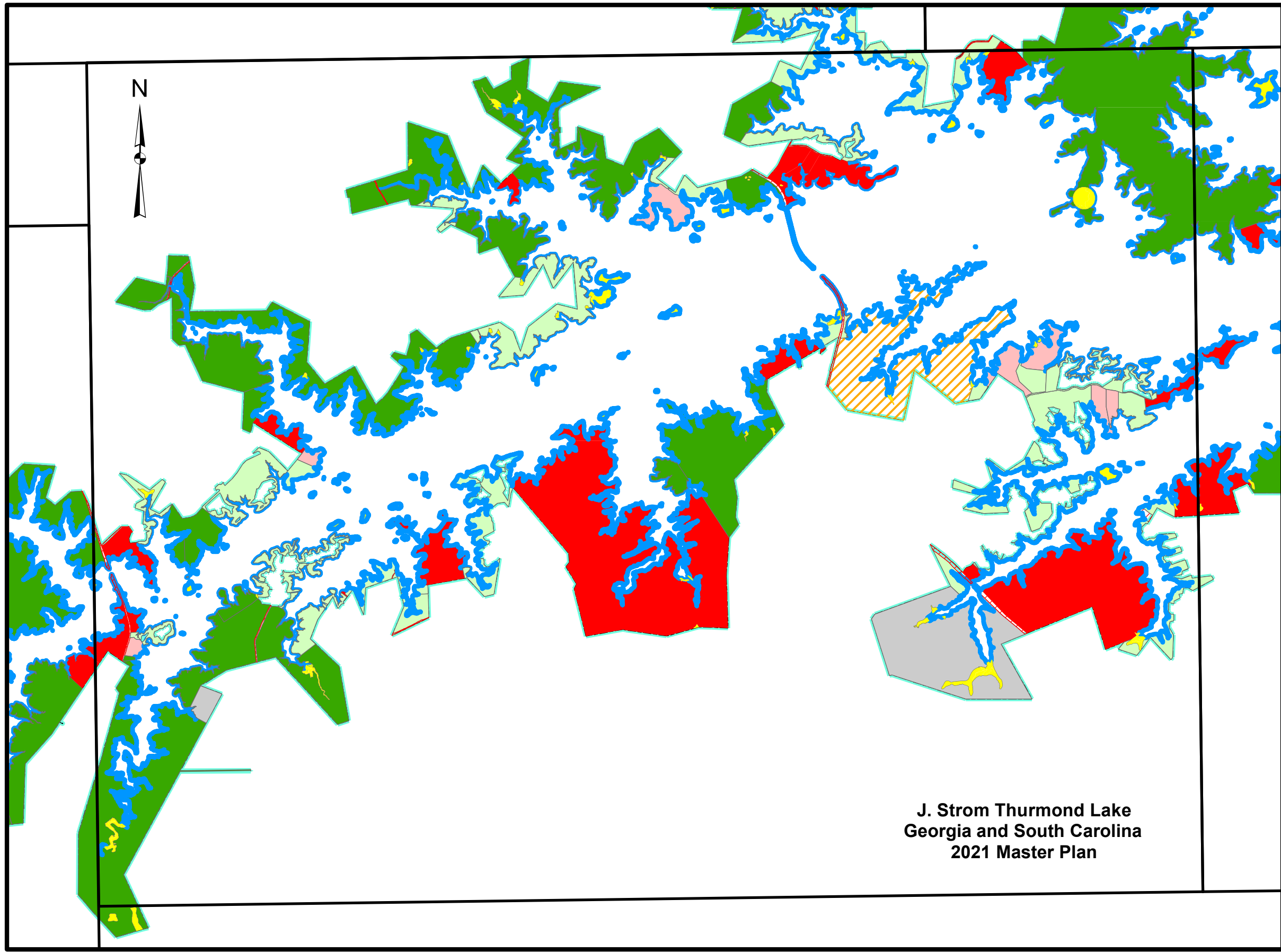
- Environmentally Sensitive Areas
- High Density Recreation
- Lake
- Low Density Recreation
- Mitigation
- Project Operations
- Recreation - Quasi_Private
- River
- Special Use
- Wildlife Mgt
- Property Line
- Zoning Index



JST Land Classification Maps- Plate 2 of 8



US Army Corps of Engineers®
Savannah District



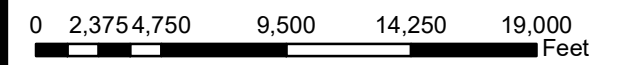
Location Map

Legend

Land Classification

- Environmentally Sensitive Areas
- High Density Recreation
- Lake
- Low Density Recreation
- Mitigation
- Project Operations
- Recreation - Quasi_Private
- River
- Special Use
- Wildlife Mgt
- Property Line
- Zoning Index

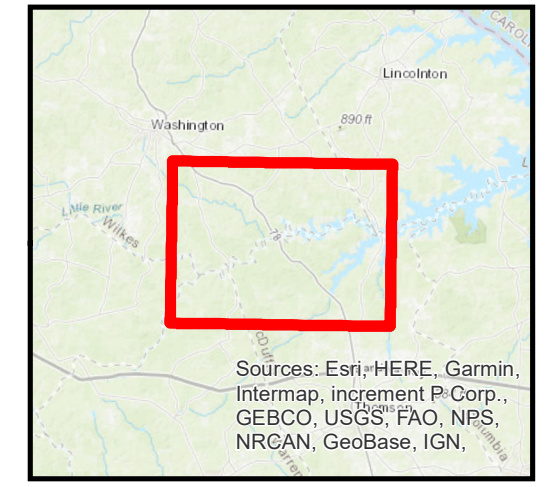
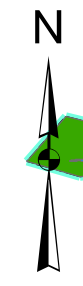
**J. Strom Thurmond Lake
Georgia and South Carolina
2021 Master Plan**



JST Land Classification Maps- Plate 3 of 8

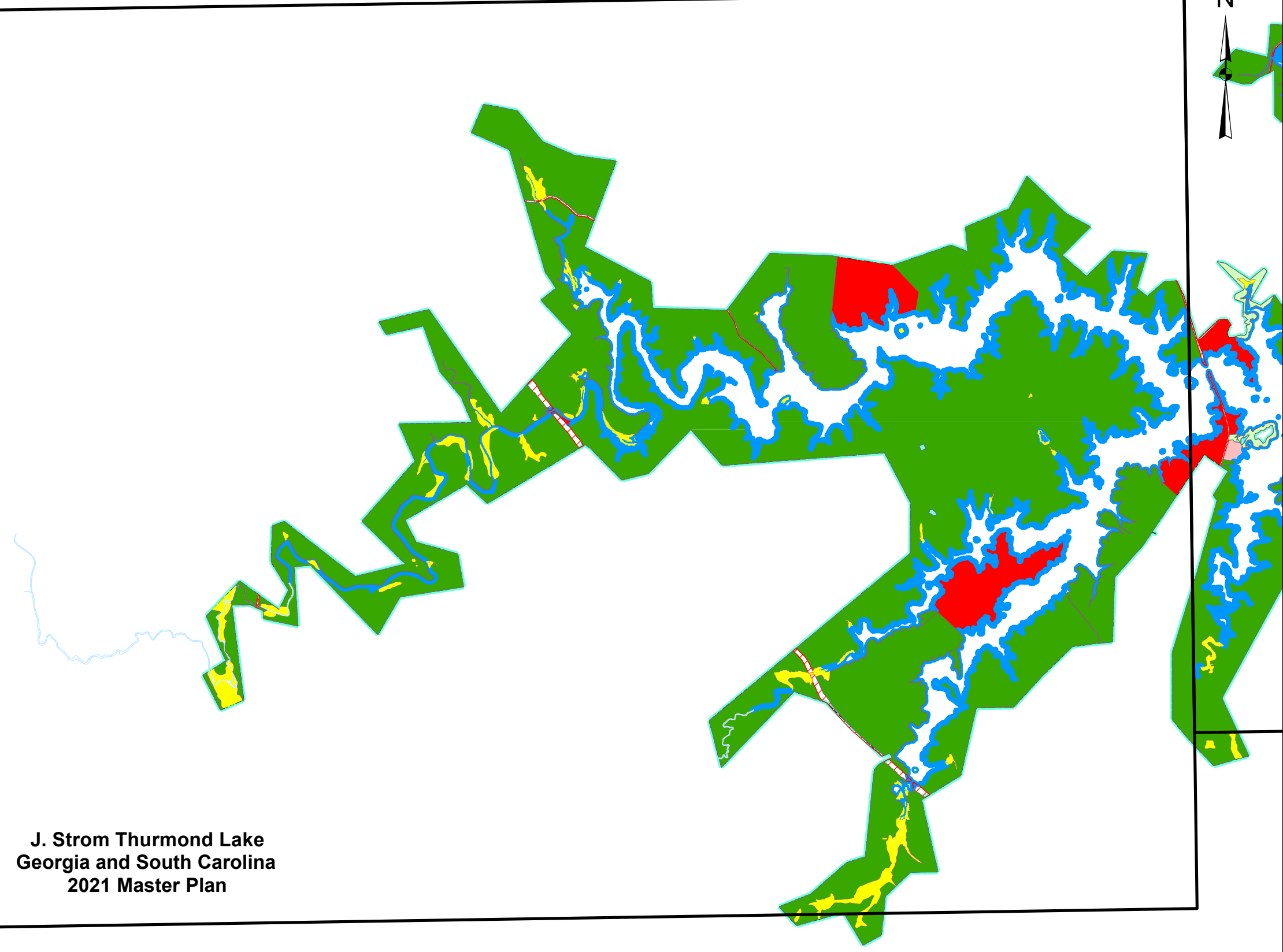


**US Army Corps
of Engineers®**
Savannah District



Location Map

Sources: Esri, HERE, Garmin, Intermap, increment P Corp., GEBCO, USGS, FAO, NPS, NRCAN, GeoBase, IGN,

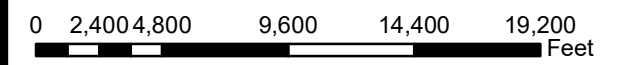


**J. Strom Thurmond Lake
Georgia and South Carolina
2021 Master Plan**

Legend

Land Classification

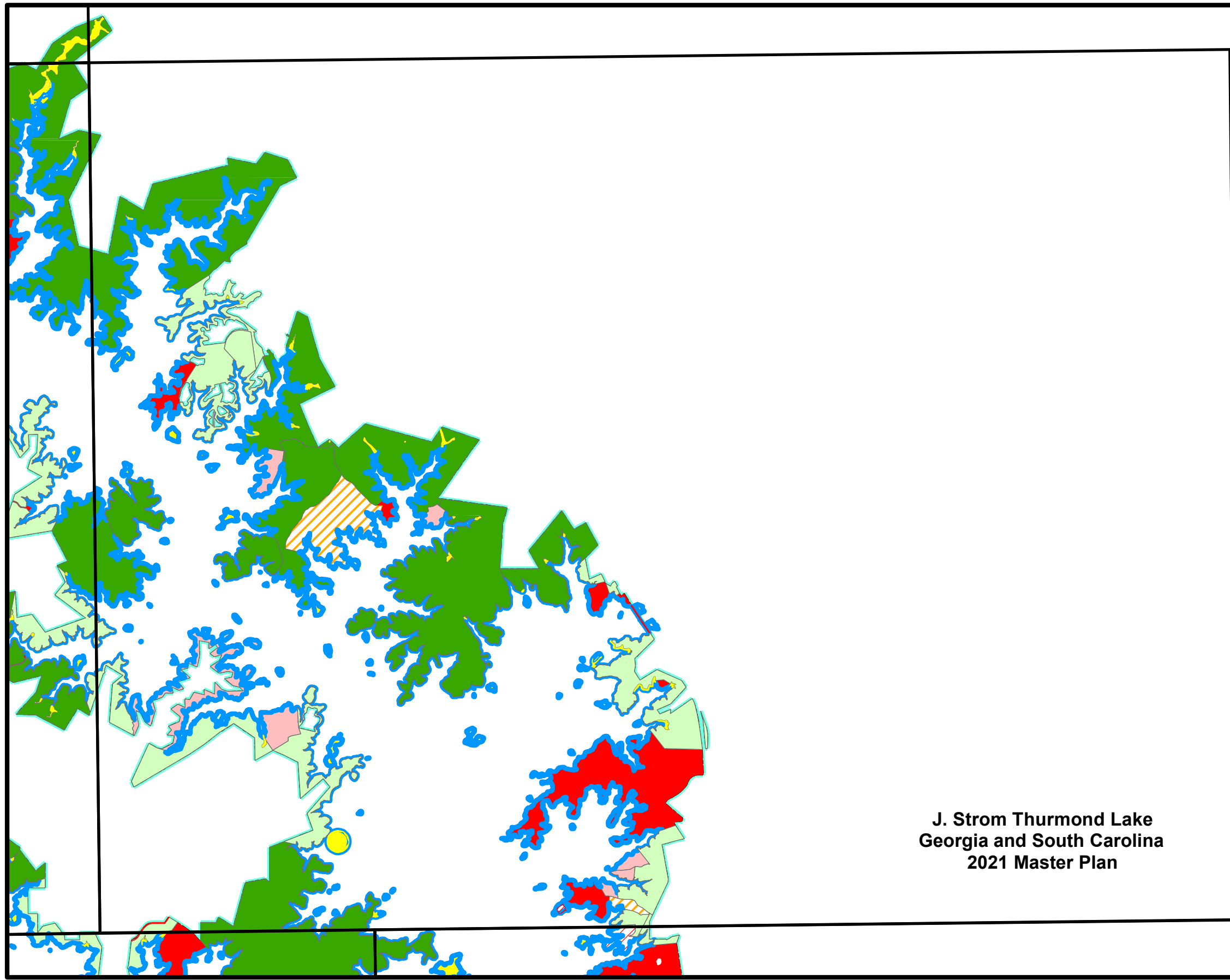
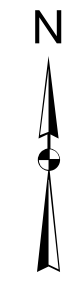
- Environmentally Sensitive Areas
- High Density Recreation
- Lake
- Low Density Recreation
- Mitigation
- Project Operations
- Recreation - Quasi_Private
- River
- Special Use
- Wildlife Mgt
- Property Line
- Zoning Index



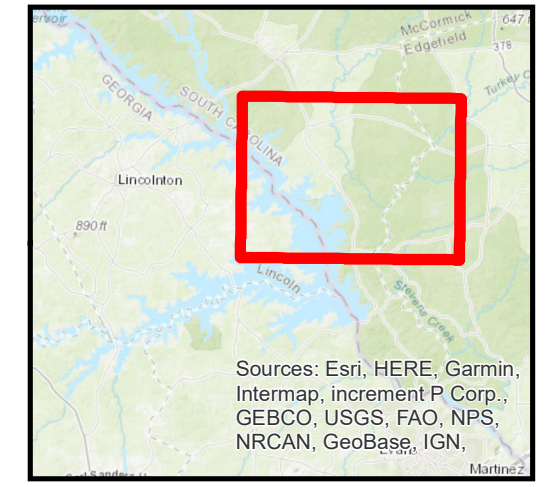
JST Land Classification Maps- Plate 4 of 8



US Army Corps of Engineers®
Savannah District



**J. Strom Thurmond Lake
Georgia and South Carolina
2021 Master Plan**



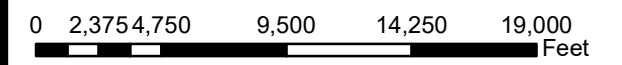
Location Map

Sources: Esri, HERE, Garmin, Intermap, increment P Corp., GEBCO, USGS, FAO, NPS, NRCAN, GeoBase, IGN, Martine

Legend

Land Classification

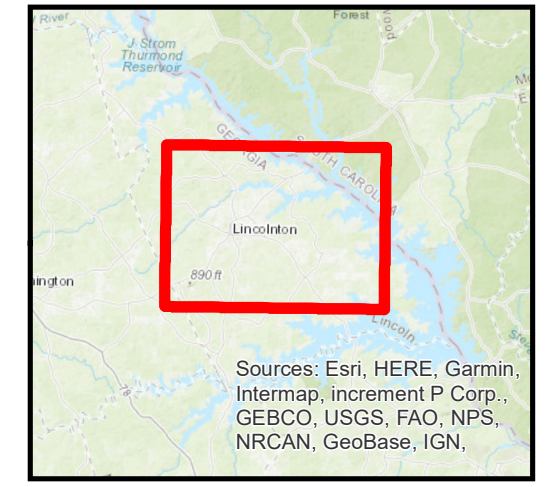
- Environmentally Sensitive Areas
- High Density Recreation
- Lake
- Low Density Recreation
- Mitigation
- Project Operations
- Recreation - Quasi_Private
- River
- Special Use
- Wildlife Mgt
- Property Line
- Zoning Index



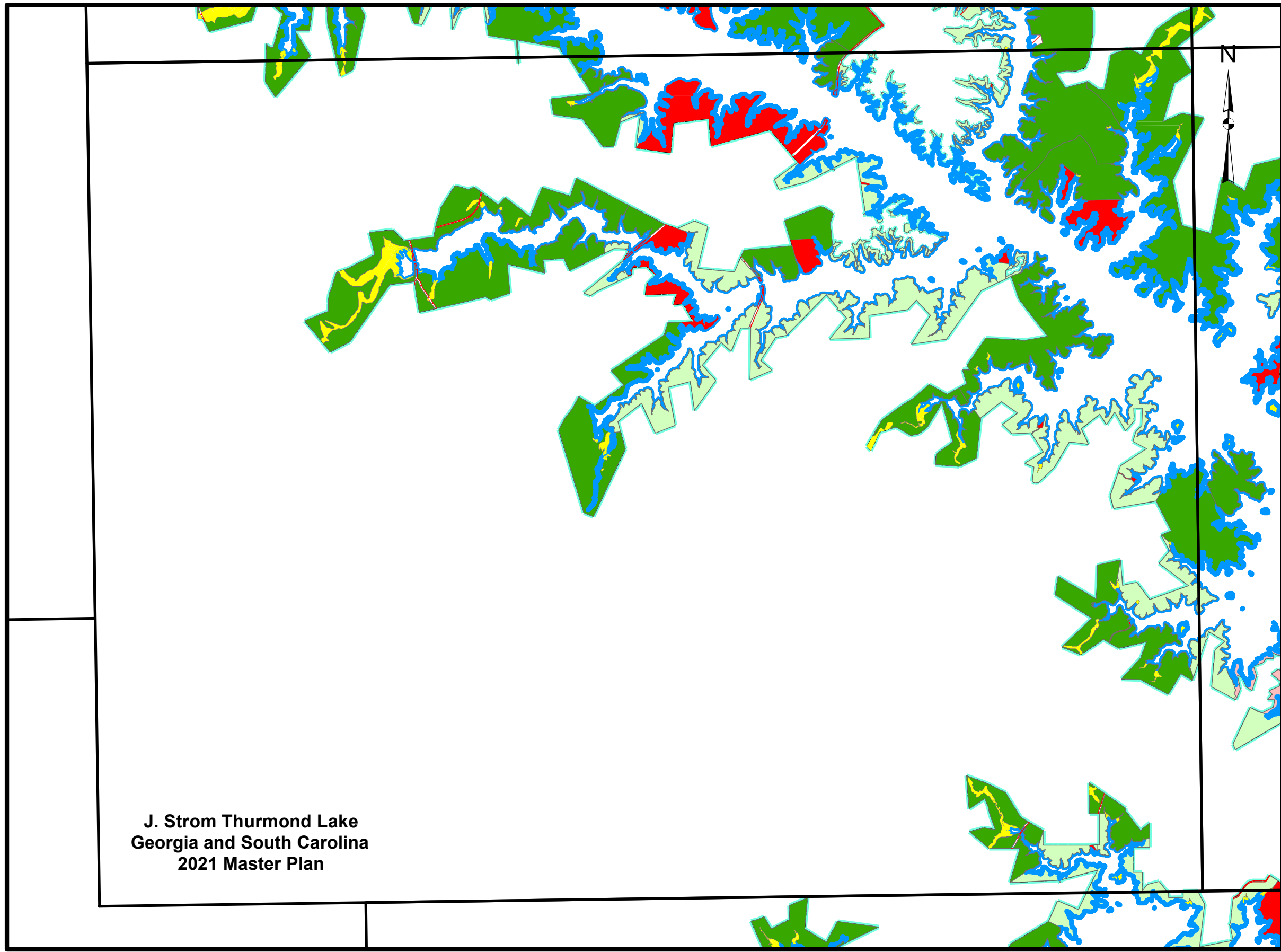
JST Land Classification Maps- Plate 5 of 8



**US Army Corps
of Engineers®**
Savannah District



Location Map

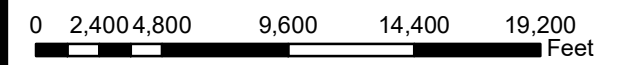


Legend

Land Classification

- Environmentally Sensitive Areas
- High Density Recreation
- Lake
- Low Density Recreation
- Mitigation
- Project Operations
- Recreation - Quasi_Private
- River
- Special Use
- Wildlife Mgt
- Property Line
- Zoning Index

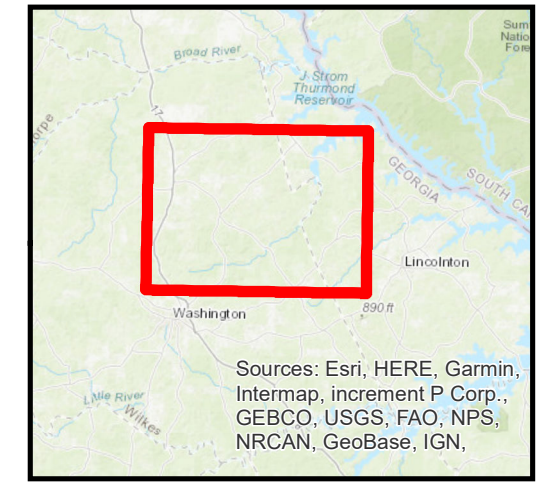
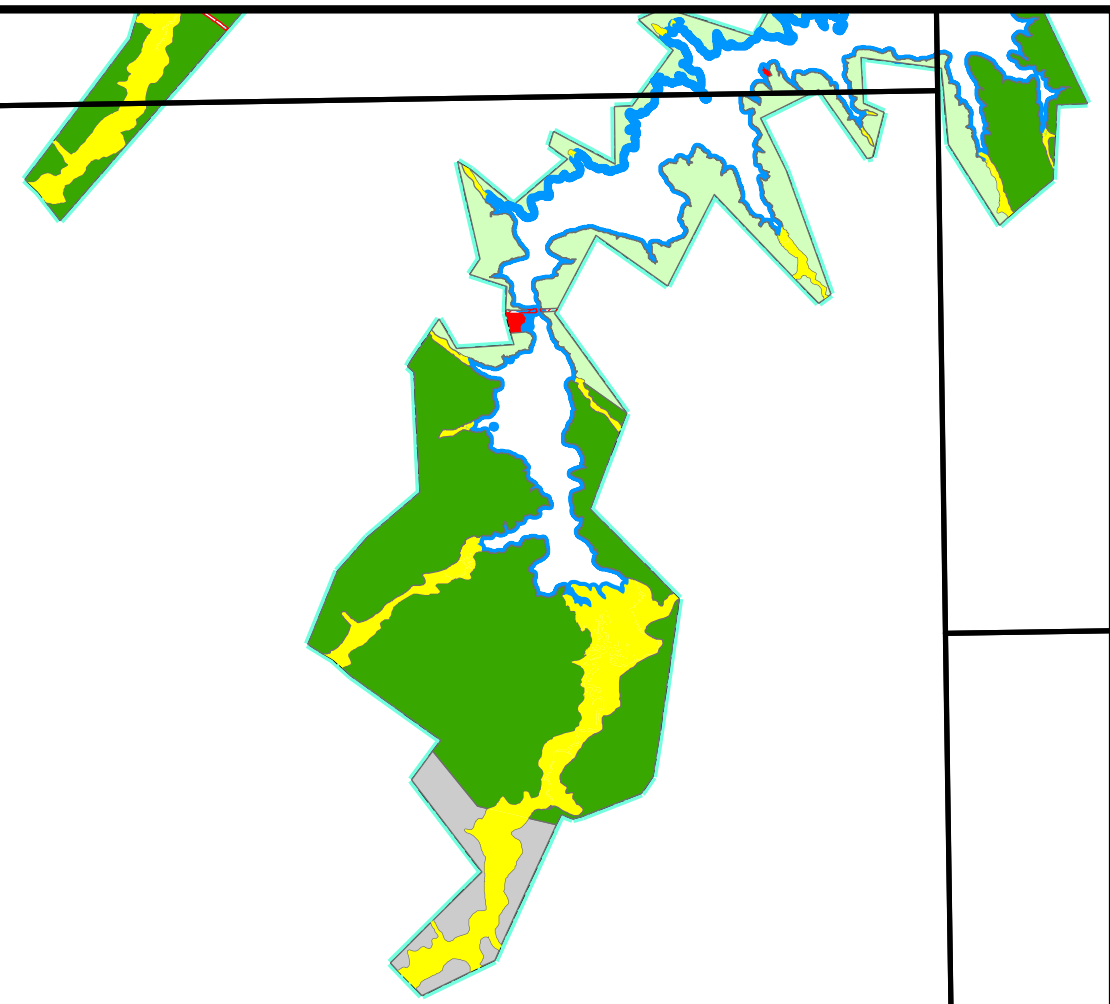
**J. Strom Thurmond Lake
Georgia and South Carolina
2021 Master Plan**



JST Land Classification Maps- Plate 6 of 8



**US Army Corps
of Engineers®**
Savannah District

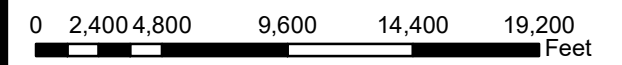


Location Map

Legend

- Land Classification**
- Environmentally Sensitive Areas
 - High Density Recreation
 - Lake
 - Low Density Recreation
 - Mitigation
 - Project Operations
 - Recreation - Quasi_Private
 - River
 - Special Use
 - Wildlife Mgt
 - Property Line
 - Zoning Index

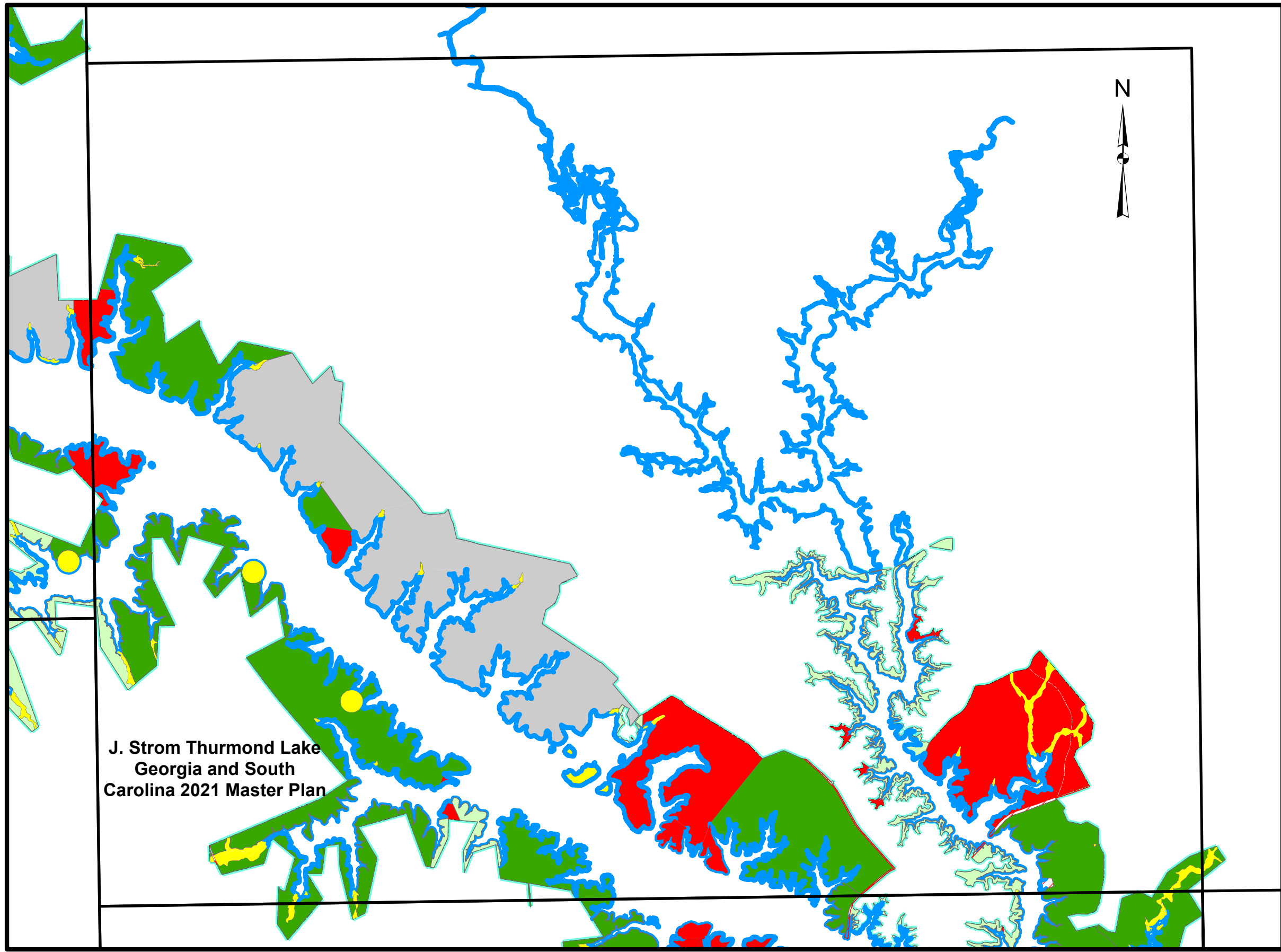
**J. Strom Thurmond Lake
Georgia and South Carolina
2021 Master Plan**



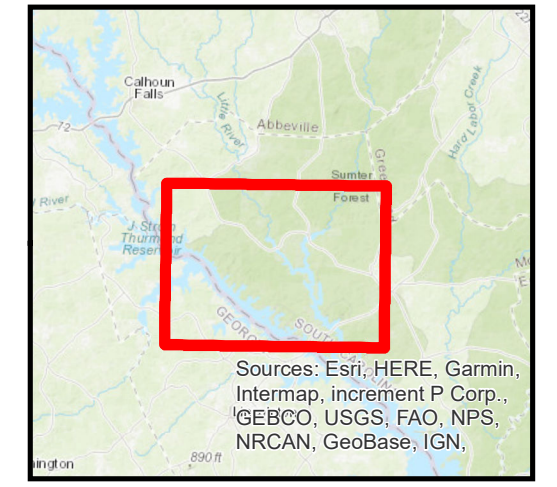
JST Land Classification Maps- Plate 7 of 8



**US Army Corps
of Engineers®**
Savannah District



J. Strom Thurmond Lake
Georgia and South
Carolina 2021 Master Plan



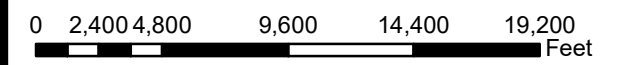
Location Map

Sources: Esri, HERE, Garmin, Intermap, increment P Corp., GEBCO, USGS, FAO, NPS, NRCAN, GeoBase, IGN,

Legend

Land Classification

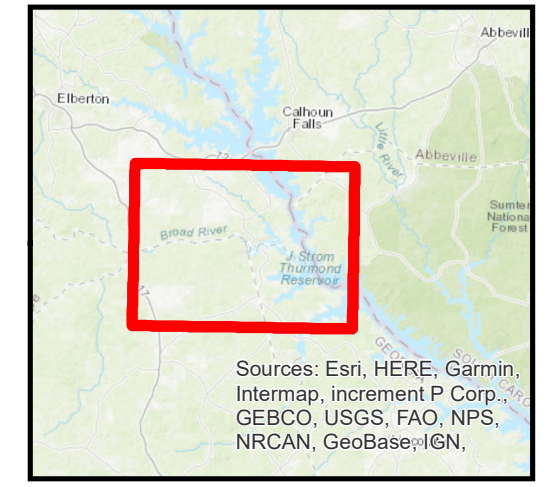
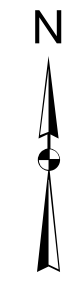
- Environmentally Sensitive Areas
- High Density Recreation
- Lake
- Low Density Recreation
- Mitigation
- Project Operations
- Recreation - Quasi_Private
- River
- Special Use
- Wildlife Mgt
- Property Line
- Zoning Index



JST Land Classification Maps- Plate 8 of 8



US Army Corps of Engineers®
Savannah District



Location Map

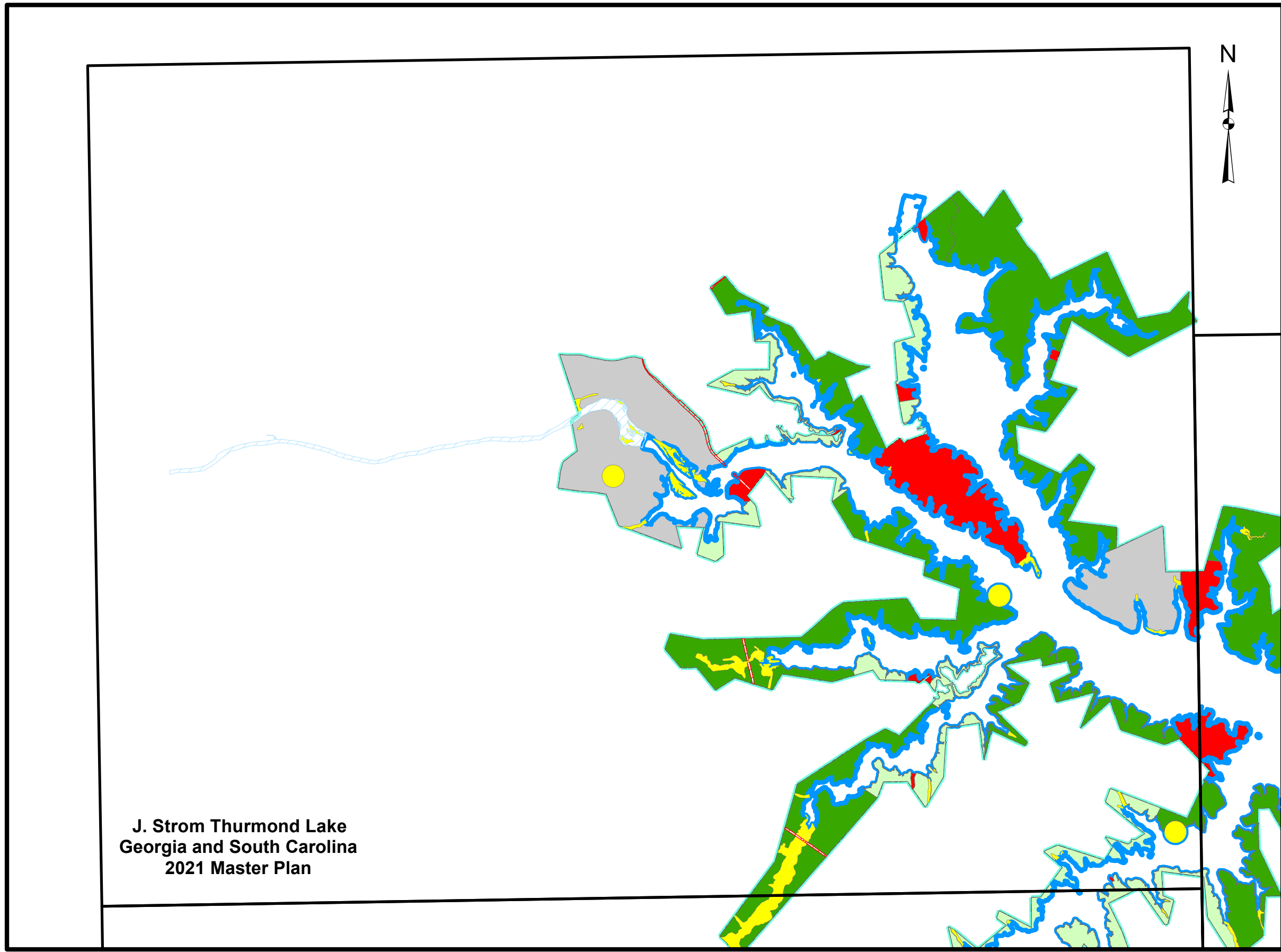
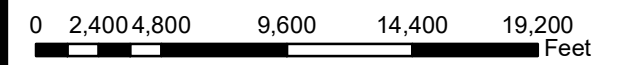
Sources: Esri, HERE, Garmin, Intermap, increment P Corp., GEBCO, USGS, FAO, NPS, NRCAN, GeoBase, IGN,

**J. Strom Thurmond Lake
Georgia and South Carolina
2021 Master Plan**

Legend

Land Classification

- Environmentally Sensitive Areas
- High Density Recreation
- Lake
- Low Density Recreation
- Mitigation
- Project Operations
- Recreation - Quasi_Private
- River
- Special Use
- Wildlife Mgt
- Property Line
- Zoning Index



Appendix B

Site-Specific Proposed Changes

LOCATION	OPERATOR	PROPOSED IMPROVEMENTS
Project Manager's Office/Visitor Center, Power Plant, Maintenance/Storage Compounds	USACE	<ul style="list-style-type: none"> - Necessary maintenance/renovation of existing buildings - Replace aging storage buildings - Add two bays to existing pole barn, USACE storage compound
Below Dam, SC Day Use Area	USACE	<ul style="list-style-type: none"> - Necessary maintenance/renovation of existing facilities - Improved parking and traffic flow at ramp
Clarks Hill Park	USACE	<ul style="list-style-type: none"> - Necessary maintenance/upgrade of existing facilities - Relocate fish cleaning station/improve traffic flow - Increase boat parking - Install playground and two park host sites
Scotts Ferry Boat Ramp	USACE	<ul style="list-style-type: none"> - Necessary maintenance/upgrade of existing facilities
Modoc Campground	USACE	<ul style="list-style-type: none"> - Necessary maintenance/upgrade of existing facilities - Electrical upgrades, sites 1-10, 12-15 - Shoreline stabilization - Re-establish beach area - Invasive species treatment
JST Volunteer Village	USACE	<ul style="list-style-type: none"> - Necessary maintenance/upgrade of existing facilities - Addition of 12 campsites, full hook-ups
Modoc Boat Ramp	USACE	<ul style="list-style-type: none"> - Necessary maintenance/upgrade of existing facilities - Additional 40-space parking - Additional launch ramps - Tournament weigh station, shelter station and restroom - Invasive species treatment
Parksville Recreation Area	USACE	<ul style="list-style-type: none"> - Necessary maintenance/upgrade of existing facilities - Disc golf course - Playground and utilities, Shelter 2 - Road realignment, expanded trailer parking - Additional vault toilet

Dordon Creek Boat Ramp	USACE	<ul style="list-style-type: none"> - Necessary maintenance/upgrade of existing facilities - Additional parking
Hawe Creek Campground	USACE	<ul style="list-style-type: none"> - Necessary maintenance/upgrade of existing facilities - Electrical upgrades, sites 25-34 - Improved traffic flow at ramp - Shoreline stabilization
Leroys Ferry Campground	USACE	<ul style="list-style-type: none"> - Necessary maintenance/upgrade of existing facilities - Campsite renovation - Shoreline stabilization - Invasive species treatment
Mt. Carmel Recreation Area	USACE	<p>Possible lease for following operations:</p> <ul style="list-style-type: none"> - Development of overnight youth camp - Cabins/yurts - Minor marina - Add courtesy dock at day use ramp
Mt. Pleasant Boat Ramp	USACE	<ul style="list-style-type: none"> - Necessary maintenance/upgrade of existing facilities
Calhoun Fall Ramp	USACE	<ul style="list-style-type: none"> - Necessary maintenance/upgrade of existing facilities
Morrahs Boat Ramp	USACE	<ul style="list-style-type: none"> - Necessary maintenance/upgrade of existing facilities - 20 additional trailer parking spaces - Potable water and new restroom - Shoreline stabilization
Gill Point Recreation Area	USACE	<ul style="list-style-type: none"> - Necessary maintenance/upgrade of existing facilities - Add vault toilet at ramp
Bussey Point Campground	USACE	<ul style="list-style-type: none"> - Necessary maintenance/upgrade of existing facilities - Add 10 campsites - Extend electricity and county water to area - Add park host site - Add Adirondack shelter, Area 3
Amity Recreation Area	USACE	<ul style="list-style-type: none"> - Necessary maintenance/upgrade of existing facilities - Upgrade restroom at boat ramp - Add second attendant pad - Replace volleyball court
Winfield Campground	USACE	<ul style="list-style-type: none"> - Necessary maintenance/upgrade of existing facilities - Add waterborne shower facility

		<ul style="list-style-type: none"> - Construct group camp with 1-20 campsites - Add 15-20 individual campsites with hookups - Add boat ramp outside campground, 70 trailer parking spaces and courtesy dock
Ridge Road Campground	USACE	<ul style="list-style-type: none"> - Necessary maintenance/upgrade of existing facilities - Relocate gate house and attendant campsites - Add 20-30 campsites with hookups - Construct additional waterborne shower facility - Add boat ramp with 70 trailer parking spaces outside campground - Invasive species treatment
Keg Creek Boat Ramp	USACE	<ul style="list-style-type: none"> - Necessary maintenance/upgrade of existing facilities - Add trailer parking spaces - Improve restroom facility - Add street lights to bank fishing/trail parking and sidewalk - Shoreline stabilization
Petersburg Campground	USACE	<ul style="list-style-type: none"> - Necessary maintenance/upgrade of existing facilities - Add 20-30 campsites with hookups - Add waterborne shower facility - Add park host/volunteer campsite - Construct amphitheater (75-person capacity) - Construct additional parking (74-80 loop) - Additional support facilities and parking at Bartram Trail parking area - Shoreline stabilization
Lake Springs Recreation Area	USACE	<ul style="list-style-type: none"> - Necessary maintenance/upgrade of existing facilities - Add park attendant/volunteer campsite - Enlarge boat ramp parking area - Expand amenities at existing group shelters - Upgrade portions of Bartram Trail connector trail - Add pet beach area
West Dam Recreation Area	USACE	<ul style="list-style-type: none"> - Necessary maintenance/upgrade of existing facilities - Add park attendant/volunteer campsite - Expand amenities at existing group shelter
Below Dam, GA Boat Ramp	USACE	<ul style="list-style-type: none"> - Necessary maintenance/upgrade of existing facilities - Improve traffic flow and parking at ramp - Maintain open vistas from upper parking area

Hamilton Branch State Park	SCPRT	- Necessary maintenance/upgrade of existing facilities
Baker Creek State Park	SCPRT	- Necessary maintenance/upgrade of existing facilities - Add courtesy dock and paved sidewalk, Hwy 378 boat ramp - Add ADA accessible fishing pier, picnic area
Hickory Knob State Park	SCPRT	- Necessary maintenance/upgrade of existing facilities - Construct new 100-room indoor access hotel, restaurant and convention center - Add 10 camper cabins adjoining campground
Bobby Brown Park	GADNR/Elbert County	- Necessary maintenance/upgrade of existing facilities - Additional yurts - Fuel dock - Additional boat ramp and parking - Beach area - Amphitheaters - 18-hole disc golf course - Miniature golf course - Outdoor education center and trails
Elijah Clark State Park	GADNR	- Necessary maintenance/upgrade of existing facilities
Mistletoe State Park	GADNR	- Necessary maintenance/upgrade of existing facilities
Clarks Hill Ball Field	McCormick County	- Necessary maintenance/upgrade of existing facilities
Parksville Wayside	McCormick County	- Necessary maintenance/upgrade of existing facilities
William Bryant Dorn Sports Fishing and Boating Facility	McCormick County	- Necessary maintenance/upgrade of existing facilities
Broad River Campground	Lincoln County	- Necessary maintenance/upgrade of existing facilities - Add multi-lane boat ramp with 40-car/trailer parking area and restroom, across Hwy 79
Hesters Ferry Campground	Lincoln County	- Necessary maintenance/upgrade of existing facilities - Add mini-marina with fuel, limited wet slips - Add day use facilities - Amphitheater - Beach

		<ul style="list-style-type: none"> - Cabins/yurts - Expand boat ramp parking
Parkway Boat Ramp	Lincoln County	<ul style="list-style-type: none"> - Necessary maintenance/upgrade of existing facilities - Improve traffic flow and parking - Add group shelter/amphitheater - Possible site for satellite marina
Eddie Fletcher Park	Lincoln County	<ul style="list-style-type: none"> - Necessary maintenance/upgrade of existing facilities
Cherokee Recreation Area	Lincoln County	<ul style="list-style-type: none"> - Necessary maintenance/upgrade of existing facilities - Amphitheater, pavilion/shelter - Additional parking - Fishing pier - Mountain bike/hiking trails - Campsites - Cabins/yurts
Clay Hill Campground	Lincoln County	<ul style="list-style-type: none"> - Necessary maintenance/upgrade of existing facilities - Add electric/water to primitive campsites - Add campsites - Add gatehouse, camp store - Upgrade existing boat ramp
Raysville Campground	McDuffie County	<ul style="list-style-type: none"> - Necessary maintenance/upgrade of existing facilities
Big Hart Campground	McDuffie County	<ul style="list-style-type: none"> - Necessary maintenance/upgrade of existing facilities - Add 15-20 campsites with hookups - Relocate gate house - Install dump station at group camp - Invasive species control (feral hogs)
Holiday Park	Wilkes County	<ul style="list-style-type: none"> - Necessary maintenance/upgrade of existing facilities
Wildwood Park	Columbia County	<ul style="list-style-type: none"> - Necessary maintenance/upgrade of existing facilities - Visitor Center with 25 parking spaces - Amphitheater with 1,000 seating capacity - Equestrian campground - ADA-accessible super playground (2-acre) - Lodge, 100-room capacity - Cabins (24) - Confidence course, team building area - Archery area - Additional hiking/biking/equestrian/multi-use trails - Relocate beach area

Plum Branch Yacht Club	Private Concessionaire	<ul style="list-style-type: none"> - Necessary maintenance/upgrade of existing facilities - Additional wet slip moorage - Additional dry storage units - Additional campsites - New bath house/laundry facility - Restaurant expansion - Seawall expansion/shoreline stabilization
Savannah Lakes Marina	Private Concessionaire	<ul style="list-style-type: none"> - Necessary maintenance/upgrade of existing facilities - Possible satellite marina development
Soap Creek Marina	Private Concessionaire	<ul style="list-style-type: none"> - Necessary maintenance/upgrade of existing facilities - Renovate/replace existing cabins and associated courtesy docks - Construct 8-12 new cabins - Replace existing aged caretaker cabin - Add additional beach - Install playground - Add additional campsites with hookups - Add second bath house facility - Add dry stack storage facility - Replace existing docks, as needed - Install additional wet slips/docks at proposed satellite marina location (below SR 220 bridge) - Miniature golf course/putting green - Swimming pool/splash pad and snack bar.
Raysville Marina	Private Concessionaire	<ul style="list-style-type: none"> - Necessary maintenance/upgrade of existing facilities - Add restaurant - Add waterborne shower facility
Clarks Hill (Thurmond) Marina	Private Concessionaire	<ul style="list-style-type: none"> - Necessary maintenance/upgrade of existing facilities - Add restaurant - Additional wet slips and dry storage facilities - Add acreage from original marina lease for additional campground development
Trade Winds Marina	Private Concessionaire	<ul style="list-style-type: none"> - Necessary maintenance/upgrade of existing facilities - Additional dry storage facilities - Boat rentals - Additional rental cabins - RV Campground development
Pointes West Army Resort (formerly Ft. Gordon)	U.S. Army, Ft. Gordon	<ul style="list-style-type: none"> - Necessary maintenance/upgrade of existing facilities - Add 11 new cottages/lodging units

Gordon Recreation Area)		<ul style="list-style-type: none"> - Add 4 additional dry storage sheds - Replace existing bath house
Clarks Hill Training Site	S.C. Army National Guard	<ul style="list-style-type: none"> - Necessary maintenance/upgrade of existing facilities - Additional training facilities approved in 2016 National Guard Real Property Development Plan (RPDP), including barracks (250-person capacity), expanded facility maintenance compound, readiness and training area for the multi-role bridge company, training support facilities for classroom and simulation training, new HQ facility, new 100-person capacity conference center, additional campsites, new shower facility, four additional cabins, and associate road and parking improvements. No additional development beyond the 2016 RPDP will be approved.
The Family "Y"	Non-profit organization	<ul style="list-style-type: none"> - Necessary maintenance/upgrade of existing facilities - Under partnership with The Children's Hospital of Georgia, the approved 2014 development plan includes the following: <ul style="list-style-type: none"> - Multi-purpose gym facility - 10 double cabin with bathroom/shower facilities - 10 single cabins with bathroom/shower facilities - Medical facility - Welcome center - Swimming pool complex - Adaptive playground - Staff/Director/Caretaker cabins - New administrative building - Fishing house - Media center - Covered pavilion - Chapel - Amphitheater - Associated roads and utilities

Appendix C

**Common Terrestrial and Aquatic Plants,
Mammals, Reptiles, Amphibians, Birds, and
Fish of
J. Strom Thurmond Project**

Terrestrial Plants

Common Name	Scientific Name
Overstory	
Southern Sugar Maple	<i>Acer barbatum</i>
Red Maple	<i>Acer rubrum</i>
Silver Maple	<i>Acer saccharum</i>
River Birch	<i>Betula nigra</i>
Bitternut Hickory	<i>Carya cordiformis</i>
Pignut Hickory	<i>Carya glabra</i>
Shagbark Hickory	<i>Carya ovata</i>
Mockernut Hickory	<i>Carya tomentosa</i>
White Ash	<i>Fraxinus americana</i>
Green Ash	<i>Fraxinus pennsylvanica</i>
Sweetgum	<i>Liquidambar styraciflua</i>
Yellow Poplar	<i>Liriodendron tulipifera</i>
Southern Magnolia	<i>Magnolia grandiflora</i>
Blackgum	<i>Nyssa sylvatica</i>
Shortleaf Pine	<i>Pinus echinata</i>
Slash Pine	<i>Pinus elliottii</i>
Longleaf Pine	<i>Pinus palustris</i>
Loblolly Pine	<i>Pinus taeda</i>
Virginia Pine	<i>Pinus virginiana</i>
Sycamore	<i>Platanus occidentalis</i>
Eastern Cottonwood	<i>Populus deltoides</i>
White Oak	<i>Quercus alba</i>
Swamp White Oak	<i>Quercus bicolor</i>
Scarlet Oak	<i>Quercus coccinea</i>
Southern Red Oak	<i>Quercus falcata</i>
Turkey Oak	<i>Quercus laevis</i>
Laurel Oak	<i>Quercus laurifolia</i>
Blackjack Oak	<i>Quercus marilandica</i>
Water Oak	<i>Quercus nigra</i>
Pin Oak	<i>Quercus palustris</i>
Willow Oak	<i>Quercus phellos</i>
Swamp Chestnut Oak	<i>Quercus prinus</i>
Northern Red Oak	<i>Quercus rubra</i>
Post Oak	<i>Quercus stellata</i>
Black Oak	<i>Quercus velutina</i>
Winged elm	<i>Ulmus alata</i>
American elm	<i>Ulmus americana</i>

Terrestrial Plants Continued

Common Name	Scientific Name
Midstory	
Boxelder	<i>Acer negundo</i>
Beauty-berry	<i>Callicarpa americana</i>
American Hornbeam, Musclewood	<i>Carpinus caroliniana</i>
Hackberry	<i>Celtis occidentalis</i>
Redbud	<i>Cercis canadensis</i>
Fringetree	<i>Chionanthus virginicus</i>
Dogwood	<i>Cornus florida</i>
Hawthorn	<i>Craetagus sp.</i>
Persimmon	<i>Diospyros virginiana</i>
American Beech	<i>Fagus grandifolia</i>
Honeylocust	<i>Gleditsia triacanthos</i>
American Holly	<i>Ilex opaca</i>
Black Walnut	<i>Juglans nigra</i>
Eastern Red Cedar	<i>Juniperus virginiana</i>
Red Mulberry	<i>Morus rubra</i>
Waxmyrtle	<i>Myrica cerifera</i>
Eastern Hop Hornbeam, Ironwood	<i>Ostrya virginiana</i>
Sourwood	<i>Oxydendron arboreum</i>
Black Cherry	<i>Prunus serotina</i>
Wild Plum	<i>Prunus sp.</i>
Winged Sumac	<i>Rhus copallina</i>
Black locust	<i>Robinia pseudoacacia</i>
Palmetto	<i>Sabal minor</i>
Black Willow	<i>Salix nigra</i>
Sassafras	<i>Sassafras albidum</i>
Strawberry Bush	<i>Euonymus americanus</i>
Southern Catapala	<i>Catalpa bignonioides</i>
Sparkleberry	<i>Vaccinium arboreum</i>
Switch Cane	<i>Arundinaria tecta</i>
River Cane	<i>Arundinaria gigantea</i>
Blueberry	<i>Vaccinium corymbosum</i>
Partridge Pea	<i>Chamaecrista fasciculata</i>
Ground Covers	
Trumpet Creeper	<i>Campsis radicans</i>
Yellow jessamine	<i>Gelsemium sempervirens</i>
Virginia Creeper	<i>Parthenocissus quinquefolia</i>
Ferns	<i>Polystichum sp.</i>
Elephant's-Foot	<i>Elephantopus tomentosus</i>
Spotted Wintergreen	<i>Chimaphila maculata</i>
Aster	<i>Aster sp.</i>
Dogfennel	<i>Eupatorium capillifolium</i>

Ground Covers Continued

Common Name	Scientific Name
Uniola	<i>Uniola sp.</i>
Poison Oak	<i>Rhus quercifolia</i>
Poison Ivy	<i>Rhus radicans</i>
Wild Sunflower	<i>Helianthus sp.</i>
Ragweed	<i>Ambrosia artemisifolia</i>
Poison Sumac	<i>Rhus vernix</i>
Partridge Berry	<i>Mitchella repens</i>
Blackberry	<i>Rubus sp.</i>
Greenbrier, Smilax	<i>Smilax sp.</i>
Panicum	<i>Panicum sp.</i>
Plumegrass	<i>Erianthus sp.</i>
Wood grass	<i>Uniola sessiliflora</i>
Beggarweed	<i>Desmodium sp.</i>
Periwinkle	<i>Vinca minor</i>
Bluestem Grass	<i>Andropogon sp.</i>
Muscadine	<i>Vitis rotundifolia</i>

Aquatic Plants

Common Name	Scientific Name
Brazilian elodea, egeria	<i>Egeria densa</i>
Alligatorweed	<i>Alternanthera philoxeroides</i>
American lotus, lotus lily	<i>Nelumbo lutea</i>
Fanwort	<i>Cabomba caroliniana</i>
Coontail, hornwort	<i>Ceratophyllum demersum</i>
Chara, musk grass	<i>Chara sp.</i>
Elodea	<i>Elodea canadensis</i>
Marsh Hibiscus	<i>Hibiscus moscheutos</i>
Southern watergrass	<i>Hydrochloa caroliniensis</i>
Water pennywort	<i>Hyrocotyle umbellata</i>
American Waterwillow	<i>Justicia americana</i>
Southern naiad	<i>Najas guadalupensis</i>
Slender naiad, spiny-leaf naiad	<i>Najas minor</i>
Fragrant waterlily	<i>Nymphaea odorata</i>
Maidencane	<i>Panicum hemitomon</i>
Water paspalum	<i>Paspalum fluitans</i>
Pickerelweed	<i>Pontederia cordata</i>
Pondweed	<i>Potamogeton sp.</i>
Arrowheads	<i>Sagittaria sp.</i>
Cattail	<i>Typha sp.</i>

Non Native Plants

Common Name	Scientific Name
Japanese honeysuckle	<i>Lonicera japonica</i>
China-berry	<i>Melia azedarach</i>
Kudzu	<i>Pueraria lobata</i>
Wisteria	<i>Wisteria frutescens</i>
Chinese Tallow	<i>Sapium sebiferum</i>
Giant Reed	<i>Arundo donax</i>
Chinese Privet	<i>Ligustrum sinense</i>
Old World Climbing Fern	<i>Lygodium microphyllum</i>
Johnson Grass	<i>Sorghum halepense</i>
Autumn Olive or Eleagnus	<i>Eleagnus umbellata</i>
Nandina	<i>Nandina domestica</i>
Brazilian Vervain	<i>Verbena brasiliensis</i>
Bamboo	<i>Phyllostachys sp</i>
Mimosa	<i>Albizia julibrissin</i>
Hydrilla	<i>Hydrilla verticillata</i>
Alligator Weed	<i>Alternanthera philoxeroides</i>
Parrot Feather	<i>Myriophyllum aquaticum</i>
Waterhyacinth	<i>Eichhornia crassipes</i>
Water primrose	<i>Ludwigia hexapetala</i>
Eurasian watermilfoil	<i>Myriophyllum spicatum</i>

Birds

Common Name	Scientific Name	Season
Ducks & Geese		
Wood Duck	<i>Aix sponsa</i>	Year Round
Mallard	<i>Anas platyrhynchos</i>	Year Round
Canada Goose	<i>Branta canadensis</i>	Year Round
Hooded Merganser	<i>Lophodytes cucullatus</i>	Year Round
Blue-winged Teal	<i>Anas discors</i>	Winter
Green-winged Teal	<i>Podilymbus podiceps</i>	Winter
American Black Duck	<i>Anas rubripes</i>	Winter
Northern Shovelers	<i>Anas clypeata</i>	Winter
American Wigeon	<i>Anas Americana</i>	Winter
Gadwall	<i>Anas strepera</i>	Winter
Northern Pintail	<i>Anas acuta</i>	Winter
Canvasback	<i>Aythya vallisnera</i>	Winter
Redhead	<i>Aythya americana</i>	Winter
Ring-necked Duck	<i>Aythya collaris</i>	Winter

Ducks & Geese Continued

Common Name	Scientific Name	Season
Greater Scaup	<i>Aythya marila</i>	Winter
Lesser Scaup	<i>Aythya affinis</i>	Winter
Long-tailed Duck	<i>Clangula hyemalis</i>	Winter
Bufflehead	<i>Bucephala albeola</i>	Winter
Common Golden eye	<i>Bucephala clangula</i>	Winter
Common Merganser	<i>Mergus merganser</i>	Winter
Red Breasted Merganser	<i>Mergus serrator</i>	Winter
Ruddy Duck	<i>Oxyura jamaicensis</i>	Summer
Loons		
Common Loon	<i>Gavia immer</i>	Winter
Pacific Loon	<i>Gavia Pacifica</i>	Winter
Red Throated Loon *	<i>Gavia stellata</i>	Winter
Grebes		
Pied Billed Grebe	<i>Podilymbus podiceps</i>	Year Round
Horned Grebe	<i>Podiceps auritus</i>	Winter
Eared Grebe	<i>Podiceps nigricollis</i>	Winter
Rails, Gallinules, & Coots		
King Rail *	<i>Rallus elegans</i>	Summer
Black Rail *	<i>Laterallus jamaicensis</i>	Summer
Virginia Rail	<i>Rallus limicola</i>	Winter
Common Moorhen	<i>Gallinula chloropus</i>	Winter
Purple Gallinule	<i>Porphyrio martinica</i>	Winter
American Coot	<i>Fulica americana</i>	Winter
Cormorants, Waders, Pelicans, & Darters		
Double-crested Cormorant	<i>Phalacrocorax auritus</i>	Year Round
Great Egret	<i>Ardea alba</i>	Summer
Great Blue Heron	<i>Ardea herodias</i>	Summer
Green Heron	<i>Butorides virescens</i>	Summer
White Ibis	<i>Eudocimus albus</i>	Summer
Least Bittern*	<i>Ixobryhus exilis</i>	Summer
American Bittern *	<i>Botaurus lentiginosus</i>	Winter
Cattle Egret	<i>Bubulcus ibis</i>	Summer
Little Blue Heron	<i>Egretta caerulea</i>	Summer
Snowy Egret	<i>Egretta thula</i>	Summer
Black crowned Night Heron	<i>Nycticorax nycticorax</i>	Summer
Yellow crowned Night Heron	<i>Nycticorax violacea</i>	Summer
Wood Stork*	<i>Mycteria americana</i>	Late Summer
Brown Pelican	<i>Pelecanus occidentalis</i>	Winter
White Pelican	<i>Pelecanus erythrorhynchos</i>	Winter
Anhinga	<i>Anhinga anhinga</i>	Summer

Birds Continued

Common Name	Scientific Name	Season
Kingfisher		
Belted Kingfisher	<i>Megaceryle alcyon</i>	Year Round
Swifts		
Chimney Swift	<i>Chaetura pelagica</i>	Summer
Hummingbird		
Ruby-throated Hummingbird	<i>Archilochus colubris</i>	Summer
Nightjars		
Chuck-will's-widow	<i>Caprimulgus carolinensis</i>	Summer
Whip-poor-will*	<i>Caprimulgus vociferus</i>	Summer
Common Nighthawk	<i>Chordeiles minor</i>	Summer
Plovers & Sandpipers		
Killdeer	<i>Charadrius vociferus</i>	Year Round
Willet *	<i>Tringa semipalmata</i>	Winter
Greater Yellowlegs	<i>Tringa melanoleuca</i>	Winter
Lesser Yellowlegs*	<i>Tringa flavipes</i>	Winter
Dunlin *	<i>Calidris alpinarctica</i>	Winter
Semipalmated Sandpiper	<i>Calidris pusilla</i>	Winter
Least Sandpiper	<i>Calidris minutilla</i>	Winter
Spotted Sandpiper	<i>Actitis macularius</i>	Winter
Upland Sandpiper	<i>Bartramia longicauda</i>	Winter
American Woodcock	<i>Scolopax minor</i>	Year Round
Wilson's Snipe	<i>Gallinago delicata</i>	Winter
Long-billed Dowitcher	<i>Limnodromus scolopaceus</i>	Winter
Short-billed Dowitcher *	<i>Limnodromus griseus</i>	Winter
Ruddy Turnstone *	<i>Arenaria interpres</i>	Winter
Gulls		
Bonaparte's Gull	<i>Chroicocephalus philadelphia</i>	Winter
Herring Gull	<i>Larus argentatus</i>	Winter
Ring-billed Gull	<i>Larus delawarensis</i>	Winter
Lesser Black-backed Gull	<i>Larus fuscus</i>	Winter
Vultures, Hawks, Harriers, Kites, Falcons, Osprey & Eagles		
Turkey Vulture	<i>Cathartes aura</i>	Year Round
Black Vulture	<i>Coragyps atratus</i>	Year Round
Cooper's Hawk	<i>Accipiter cooperii</i>	Year Round
Sharp-shinned Hawk	<i>Accipiter striatus</i>	Winter
Red-tailed Hawk	<i>Buteo jamaicensis</i>	Year Round
Broad-winged Hawk	<i>Buteo platypterus</i>	Summer
Red-shouldered Hawk	<i>Buteo lineatus</i>	Year Round
Northern Harrier	<i>Circus cyaneus</i>	Winter
Swallow-tailed Kite *	<i>Elanoides forficatus</i>	Summer

Vultures, Hawks, Harriers, Kites, Falcons, Osprey & Eagles Continued

Common Name	Scientific Name	Season
Mississippi Kite	<i>Ictinia mississippiensis</i>	Summer
Peregrine Falcon *	<i>Falco peregrinus</i>	Winter
American Kestrel *	<i>Falco sparverius</i>	Year Round
Osprey	<i>Pandion haliaetus</i>	Year Round
Bald Eagle*	<i>Haliaeetus leucocephalus</i>	Year Round
Golden Eagle *	<i>Aquila chrysaetos</i>	Year Round
Pigeons and Doves		
Mourning Dove	<i>Zenaida macroura</i>	Year Round
Common Ground Dove*	<i>Columbina passerina</i>	Year Round
Eurasian Collared - Dove	<i>Streptopelia decaocto</i>	Year Round
Rock Pigeon	<i>Columba livia</i>	Year Round
Cuckoos		
Yellow-billed Cuckoo	<i>Coccyzus americanus</i>	Summer
Turkeys and New World Quail		
Northern Bobwhite	<i>Colinus virginianus</i>	Year Round
Wild Turkey	<i>Meleagris gallopavo</i>	Year Round
Waxwings		
Cedar Waxwing	<i>Bombycilla cedrorum</i>	Winter
Sparrows, Grosbeaks, Buntings, & Old World Sparrows		
Eastern Towhee	<i>Pipilo erythrophthalmus</i>	Year Round
Bachman's Sparrow *	<i>Aimophila aestivalis</i>	Year Round
Swamp Sparrow	<i>Melospiza georgiana</i>	Winter
Savannah Sparrow	<i>Passerculus sandwichensis</i>	Winter
Fox Sparrow	<i>Passerella iliaca</i>	Winter
Vesper Sparrow	<i>Poocetes gramineus</i>	Winter
Chipping Sparrow	<i>Spizella passerine</i>	Year Round
White-throated Sparrow	<i>Zonotrichia albicollis</i>	Winter
White-crowned Sparrow	<i>Zonotrichia leucophrys</i>	Winter
Field Sparrow	<i>Spizella pusilla</i>	Year Round
Grasshopper Sparrow	<i>Ammodramus savannarum</i>	Year Round
Song Sparrow	<i>Melospiza melodia</i>	Year Round
White-throated Sparrow	<i>Zonotrichia albicollis</i>	Winter
Henslow's Sparrow *	<i>Ammodramus henslowii</i>	Winter
LeConte's Sparrow*	<i>Ammodramus leconteii</i>	Winter
Nelson's Sparrow *	<i>Ammodramus nelsoni</i>	Winter
Dark-eyed Junco	<i>Junco hyemalis</i>	Winter
Northern Cardinal	<i>Cardinalis cardinalis</i>	Year Round
Blue Grosbeak	<i>Passerina caerulea</i>	Year Round
Indigo Bunting	<i>Passerina cyanea</i>	Summer
Painted Bunting*	<i>Passerina ciris</i>	Summer
Dickcissel	<i>Spiza americana</i>	Winter
House Sparrow	<i>Passer domesticus</i>	Year Round

Birds Continued

Common Name	Scientific Name	Season
Crows & Jays		
American Crow	<i>Corvus brachyrhynchos</i>	Year Round
Fish Crow	<i>Corvus ossifragus</i>	Year Round
Blue Jay	<i>Cyanocitta cristata</i>	Year Round
Finches		
American Goldfinch	<i>Carduelis tristis</i>	Year Round
House Finch	<i>Carpodacus mexicanus</i>	Year Round
Purple Finch	<i>Carpodacus purpureus</i>	Winter
Pine Siskin	<i>Spinus pinus</i>	Winter
Blackbirds and Orioles		
Bobolink	<i>Dolichonyx oryzivorus</i>	Winter
Red-winged Blackbird	<i>Agelaius phoeniceus</i>	Summer
Rusty Blackbird *	<i>Euphagus carolinus</i>	Winter
Orchard Oriole	<i>Icterus spurius</i>	Summer
Brown-headed Cowbird	<i>Molothrus ater</i>	Summer
Common Grackle	<i>Quiscalus quiscula</i>	Summer
Eastern Meadowlark	<i>Sturnella magna</i>	Summer
Shrikes		
Loggerhead Shrike*	<i>Lanius ludovicianus</i>	Summer
Mockingbirds and Thrashers		
Northern Mockingbird	<i>Mimus polyglottos</i>	Year Round
Brown Thrasher	<i>Toxostoma rufum</i>	Year Round
Gray Catbird	<i>Dumetella carolinensis</i>	Year Round
Chickadees and Titmice		
Tufted Titmouse	<i>Baeolophus bicolor</i>	Year Round
Carolina Chickadee	<i>Poecile carolinensis</i>	Year Round
Wood Warblers		
Pine Warbler	<i>Dendroica pinus</i>	Year Round
Yellow-breasted Chat	<i>Icteria virens</i>	Summer
Prothonotary Warbler *	<i>Protonotaria citrea</i>	Summer
American Redstart	<i>Setophaga ruticilla</i>	Summer
Hooded Warbler	<i>Wilsonia citrina</i>	Summer
Ovenbird	<i>Seiurus aurocapilla</i>	Summer
Louisiana Waterthrush	<i>Seiurus motacilla</i>	Summer
Black-and-White Warbler	<i>Mniotilta varia</i>	Summer
Kentucky Warbler *	<i>Oporornis formosus</i>	Summer
Common Yellowthroat	<i>Geothlypis trichas</i>	Summer
Hooded Warbler	<i>Wilsonia citrina</i>	Summer
Northern Parula	<i>Parula americana</i>	Summer
Yellow-throated Warbler	<i>Dendroica dominica</i>	Summer
Prairie Warbler *	<i>Dendroica discolor</i>	Summer

Wood Warblers Continued

Common Name	Scientific Name	Season
Yellow-rumped Warbler	<i>Dendroica coronata</i>	Winter
Blue-winged Warbler *	<i>Vermivora pinus</i>	Summer
Cerulean Warbler *	<i>Dendroica cerulea</i>	Summer
Palm Warbler	<i>Dendroica palmarum</i>	Winter
Swainson's Warbler*	<i>Limnothlypis swainsonii</i>	Summer
Orange-crowned Warbler	<i>Vermivora celata</i>	Winter
Tanagers		
Summer Tanager	<i>Piranga rubra</i>	Summer
Scarlet Tanager	<i>Piranga olivacea</i>	Summer
Gnatcatchers, Kinglets, & Thrushes		
Ruby-crowned Kinglet	<i>Regulus calendula</i>	Winter
Golden-crowned Kinglet	<i>Regulus strapa</i>	Winter
Blue-gray Gnatcatcher	<i>Polioptila caerulea</i>	Summer
Wood Thrush*	<i>Hylocichla mustelina</i>	Summer
Eastern Bluebird	<i>Sialia sialis</i>	Year Round
Hermit Thrush	<i>Catharus guttatus</i>	Winter
American Robin	<i>Turdus migratorius</i>	Year Round
Nuthatches and Creepers		
White-breasted Nuthatch	<i>Sitta carolinensis</i>	Year Round
Red-breasted Nuthatch	<i>Sitta canadensis</i>	Winter
Brown-headed Nuthatch*	<i>Sitta pusilla</i>	Year Round
Brown Creeper	<i>Certhia americana</i>	Winter
Starlings		
European Starling	<i>Sturnus vulgaris</i>	Year Round
Wren, Pipits, & Larks		
Carolina Wren	<i>Thryothorus ludovicianus</i>	Year Round
House Wren	<i>Troglodytes aedon</i>	Winter
Winter Wren	<i>Troglodytes troglodytes</i>	Winter
Sedge Wren*	<i>Cistothorus platensis</i>	Winter
Marsh Wren	<i>Cistothorus palustris</i>	Winter
American Pipit	<i>Anthus rubescens</i>	Winter
Horned Lark	<i>Eremophila alpestris</i>	Winter
Flycatchers		
Eastern Wood Pewee	<i>Contopus virens</i>	Summer
Acadian Flycatcher	<i>Empidonax virescens</i>	Summer
Great Crested Flycatcher	<i>Myiarchus crinitus</i>	Summer
Eastern Phoebe	<i>Sayornis phoebe</i>	Summer
Eastern Kingbird	<i>Tyrannus tyrannus</i>	Summer

Birds Continued

Common Name	Scientific Name	Season
Vireos		
Red-eyed Vireo	<i>Vireo olivaceus</i>	Summer
White-eyed Vireo	<i>Vireo Griueus</i>	Summer
Yellow-Throated Vireo	<i>Vireo flavifrons</i>	Summer
Blue-headed Vireo	<i>Vireo solitaries</i>	Winter
Woodpeckers		
Pileated Woodpecker	<i>Dryocopus pileatus</i>	Year Round
Red-bellied Woodpecker	<i>Melanerpes carolinus</i>	Year Round
Red-headed Woodpecker *	<i>Melanerpes erythrocephalus</i>	Year Round
Downy Woodpecker	<i>Picoides pubescens</i>	Year Round
Hairy Woodpecker	<i>Picoides villosus</i>	Year Round
Yellow-bellied Sapsucker	<i>Sphyrapicus varius</i>	Winter
Northern Flicker	<i>Colaptes auratus</i>	Year Round
Red-cockaded Woodpecker X	<i>Picoides borealis</i>	Year Round
Owls		
Great Horned Owl	<i>Bubo virginianus</i>	Year Round
Eastern Screech-Owl	<i>Megascops asio</i>	Year Round
Barred Owl	<i>Strix varia</i>	Year Round
Barn Owl	<i>Tyto alba</i>	Year Round
Swallows		
Tree Swallow	<i>Tachycineta bicolor</i>	Summer
Northern Rough-winged Swallow	<i>Stelgidopteryx serripennis</i>	Summer
Purple Martin	<i>Progne subis</i>	Summer
Cliff Swallow	<i>Petrochelidon pyrrhonota</i>	Summer
Barn Swallow	<i>Hirundo Rustica</i>	Summer
<p>* - Identified as species of concern under the Migratory Bird Treaty Act X - possible, not found on project, Compiled from "Georgia Breeding Bird Atlas", Georgia Ornithological Society Records, UGA Museum of Natural History Records, Peterson Field Guide (2010) – Range maps, and field observations.</p>		

Mammals

Common Name	Scientific Name
Hispid Cotton Rat	<i>Sigmodon hispidus</i>
Golden Mouse	<i>Ochrotomys nuttalli</i>
Eastern Harvest Mouse	<i>Reithrodontomys humulis</i>
White-footed Mouse	<i>Peromyscus leucopus</i>
Cotton Mouse	<i>Peromyscus gossypinus</i>
Common Muskrat	<i>Ondatra zibethicus</i>

Mammals Continued

Common Name	Scientific Name
Oldfield Mouse	<i>Peromyscus polionotus</i>
Southern Flying Squirrel	<i>Glaucomys volans</i>
Eastern Gray Squirrel	<i>Sciurus carolinensis</i>
Eastern Fox Squirrel	<i>Sciurus niger</i>
Eastern Chipmunk	<i>Tamias striatus</i>
Southern Short-tailed Shrew	<i>Blarina carolinensis</i>
Least Shrew	<i>Cryptotis parva</i>
Eastern Mole	<i>Scalopus aquaticus</i>
Eastern Cottontail	<i>Sylvilagus aquaticus</i>
Swamp Rabbit	<i>Sylvilagus floridanus</i>
Eastern Pipistrille	<i>Pipistrellus subflavus</i>
Rafineques Big Eared bat	<i>Corynorhinus rafinesquii</i>
Southeastern Myotis	<i>Myotis austroriparius</i>
Big Brown Bat	<i>Eptesicus fuscus</i>
Little Brown Bat	<i>Myotis lucifugus</i>
Silver-haired Bat	<i>Lasionycteris noctivagans</i>
Eastern Red Bat	<i>Lasiurus borealis</i>
Hoary Bat	<i>Lasiurus cinereus</i>
Seminole Bat	<i>Lasiurus seminolus</i>
Evening Bat	<i>Pipistrellus subflavus</i>
Coyote	<i>Canis latrans</i>
Gray Fox	<i>Urocyon cinereoargenteus</i>
Red Fox	<i>Vulpes vulpes</i>
Bobcat	<i>Lynx rufus</i>
Striped Skunk	<i>Mephitis mephitis</i>
Spotted Skunk	<i>Spilogale putorius</i>
Long-tailed Weasel	<i>Mustela frenata</i>
Mink	<i>Mustela vison</i>
Northern Raccoon	<i>Procyon lotor</i>
Northern River Otter	<i>Lontra canadensis</i>
Virginia Opossum	<i>Didelphis virginiana</i>
American Beaver	<i>Castor canadensis</i>
Nine-banded Armadillo	<i>Dasypus novemcinctus</i>
White-tailed Deer	<i>Odocoileus virginianus</i>

Reptiles

Common Name	Scientific Name
Snakes	
Eastern Black Racer	<i>Coluber constrictor</i>
Corn Snake	<i>Elaphe guttata</i>
Rat Snake	<i>Elaphe obsoleta</i>

Snakes Continued

Common Name	Scientific Name
Eastern Hognose Snake	<i>Heterodon platirhinos</i>
Southern Hognose	<i>Heterodon simus</i>
Mole Snake	<i>Lampropeltis calligaster</i>
Eastern King Snake	<i>Lampropeltis getula</i>
Scarlet King	<i>Lampropeltis triangulum elapsoides</i>
Brown Snake	<i>Storeria dekayi</i>
Coachwhip	<i>Masticophis flagellum</i>
Plain-bellied Watersnake	<i>Nerodia erythrogaster</i>
Northern Watersnake	<i>Nerodia sipedon</i>
Brown Watersnake	<i>Nerodia taxispilota</i>
Rough Green Snake	<i>Opeodrys aestivus</i>
Queen Snake	<i>Regina septemvittata</i>
Red-bellied Snake	<i>Storeria occipitomaculata</i>
Southeastern Crowned Snake	<i>Tantila coronata</i>
Eastern Ribbon Snake	<i>Thamnophis suaritus</i>
Common Garter Snake	<i>Thamnophis sirtalis</i>
Rough Earth Snake	<i>Virginia striatula</i>
Smooth Earth Snake	<i>Virginia valeriae</i>
Copperhead	<i>Agkistrodon contortrix</i>
Cottonmouth	<i>Agkistrodon piscivorus</i>
Timber Rattlesnake	<i>Crotalus horridus</i>
Pygmy Rattlesnake	<i>Sistrurus miliarius</i>
Lizards	
Eastern Fence Lizard	<i>Sceloporus undulatus</i>
Green Anole	<i>Anolis carolinensis</i>
Five-lined Skink	<i>Eumeces fasciatus</i>
Southeastern Five-lined Skink	<i>Eumeces inexpectatus</i>
Six-lined Racerunner	<i>Cnemidophorus sexlineatus</i>
Slender Glass Lizard	<i>Ophisaurus attenuatus</i>
Eastern Glass Lizard	<i>Ophisaurus ventralis</i>
Broadhead Skink	<i>Eumeces laticeps</i>
Ground Skink	<i>Scincella lateralis</i>
American Alligator	<i>Alligator mississippiensis</i>
Turtles	
Common Snapping Turtle	<i>Chelydra serpentina</i>
Eastern Box Turtle	<i>Terrapene carolina</i>
Pond Slider	<i>Trachemys scripta</i>
Painted Turtle	<i>Chrysemys picta</i>

Turtles Continued

Common Name	Scientific Name
River Cooter	<i>Pseudemys coninna</i>
Eastern Musk Turtle	<i>Kinosternon subrubrum</i>
Common Musk Turtle	<i>Sternotherus odoratus</i>
Spiny Softshell	<i>Apalone spinifera</i>
Amphibians	
Frogs and Toads	
American Toad	<i>Bufo americanus</i>
Fowler's Toad	<i>Bufo fowleri</i>
Northern Cricket Frog	<i>Acris crepitans</i>
Bird-voiced Treefrog	<i>Hyla avivoca</i>
Cope's Gray Treefrog	<i>Hyla chrysoscelis</i>
Green Treefrog	<i>Hyla cinerea</i>
Barking Treefrog	<i>Hyla gratiosa</i>
Squirrel Treefrog	<i>Hyla squirella</i>
Spring Peeper	<i>Pseudacris crucifer</i>
Upland Chorus Frog	<i>Pseudacris feriarum</i>
Southern Chorus Frog	<i>Pseudacris nigrita</i>
Eastern Narrowmouth Toad	<i>Gastrophryne carolinensis</i>
Eastern Spadefoot Toad	<i>Scaphiopus holbrookii</i>
Bullfrog	<i>Rana catesbeiana</i>
Green Frog / Bronze Frog	<i>Rana clamitans</i>
Pickerel Frog	<i>Rana palustris</i>
Southern Leopard Frog	<i>Rana sphenoccephala</i>
Salamanders	
Spotted Salamander	<i>Ambystoma maculatum</i>
Marbled Salamander	<i>Ambystoma opacum</i>
Mole Salamander	<i>Ambystoma talpoideum</i>
Two-toed Amphiuma	<i>Amphiuma means</i>
Spotted Dusky Salamander	<i>Desmognathus conanti</i>
Two-lined Salamander	<i>Eueycea bislineata complex</i>
Three-lined Salamander	<i>Eueycea guttolineatta</i>
Atlantic Coast Slimy Salamander	<i>Plethodon chlorobryonis</i>
Savannah Slimy Salamander	<i>Plethodon savannah</i>
Mud Salamander	<i>Pseudotriton montanus</i>
Red Salamander	<i>Pseudotriton ruber</i>
**Compiled utilizing "Amphibians and Reptiles of Georgia" and the UGA Museum of Natural History Records website	

Fish

Common Name	Scientific Name
Game Fish	
Bass	<i>Moronidae</i>
Striped bass*	<i>Morone saxatilis</i>
White bass	<i>Morone chrysops</i>
Hybrid bass*	<i>Morone saxatilis</i> x <i>Morone chrysops</i>
White perch	<i>Morone americana</i>
Sunfish	<i>Centrarchidae</i>
Largemouth bass	<i>Micropterus salmoides</i>
Spotted bass	<i>Micriopterus punctulatus</i>
Redeye bass	<i>Micropterus coosae</i>
Black crappie	<i>Pomoxis nigromaculatus</i>
White crappie	<i>Pomoxis annularis</i>
Bluegill	<i>Lepomis macrochirus</i>
Redbreast	<i>Lepomis auritus</i>
Green sunfish	<i>Lepomis cyanellus</i>
Pumpkinseed	<i>Lepomis gibbosus</i>
Flier	<i>Centrarchus macropterus</i>
Warmouth	<i>Chaenobryttus coronaris</i>
Redear	<i>Lepomis microlophus</i>
Perch	<i>Percidae</i>
Yellow perch	<i>Perca flavescens</i>
Rough Fish	
Catfish	<i>Ictaluridae</i>
Channel catfish	<i>Ictalurus punctatus</i>
White catfish	<i>Ictalurus catus</i>
Blue catfish	<i>Ictalurus furcatus</i>
Flat bullhead	<i>Ictalurus platycephalus</i>
Brown bullhead	<i>Ictalurus nebulosus</i>
Flathead catfish	<i>Pylodictis olivaris</i>
Other	
Longnose gar	<i>Lepospsteus osseus</i>
Chain pickerel (jack)	<i>Esox niger</i>
Redhorse sucker	<i>Maxostoma</i> spp.
Northern hogsucker	<i>Hypentelium nigricans</i>
Spotted sucker	<i>Minytrema melanops</i>
Forage Species	
Shad and herring	<i>Clupeidae</i>
Gizzard shad	<i>Dorosoma cepedianum</i>
Threadfin shad	<i>Dorosoma petenense</i>
Blueback herring	<i>Alosa aestivalis</i>

Forage Species Continued

Minnows	<i>Cyprinidae</i>
Common carp	<i>Cyprinus carpio</i>
Grass carp*	<i>Ctenopharyngodon idella</i>
Spottail shiner	<i>Notropis hudsonius</i>
Golden shiner	<i>Notemigonus chrysoleucas</i>
Livebearers	<i>Poeciliidae</i>
Mosquito fish	<i>Gambusia affinis</i>

* Stocked Species

Appendix D

Georgia Environmental Protection Division Order Concerning DDT Contamination



DEPARTMENT OF THE ARMY
SAVANNAH DISTRICT, CORPS OF ENGINEERS
J. STROM THURMOND LAKE
510 CLARK'S HILL HIGHWAY
CLARKS HILL, SC 29621-9703
April 1, 2015

Subject: J. Strom Thurmond Lake Airstrip #1, HSI Site Number 10384, Compliance Status Report, Columbia County, Georgia, Thurmond Lake

Mr. John Maddox
Georgia Department of Natural Resources
Environmental Protection Division
Hazardous Sites Response Program
2 Martin Luther King Jr. Drive, Suite 1462 East
Atlanta, Georgia 30334-8600

Dear Mr. Maddox:

Enclosed is the Monitoring Evaluation Form for 2014 and 2015. J. Strom Thurmond Lake Airstrip #1, HSI Site Number 10384. There have been no changes to the site nor its land use designation in the Thurmond Master Plan.

If you have any questions regarding the compliance status report, please contact Environmental Compliance Coordinator Eric Haskell at 864-333-1171.

Sincerely,

A handwritten signature in black ink, appearing to read "Scott M. Hyatt".

Scott M. Hyatt
Operations Project Manager

Enclosure

**SITE USE AND TYPE 4 SOIL RRS MONITORING
EVALUATION FORM**

J Strom Thurmond Lake Airstrip#1, HSI Site No. 10384


TYPE	No.	CRITERIA RESPONSE	YES	NO
Land Use	1	Does this HSRA site meet the definition of non-residential property as defined in HSRA Rule 391-3-19.02(2)? "Non-residential property means any property or portion of a property not currently being used for human habitation or for other purposes with a similar potential for human exposure, at which activities have been or are being conducted that can be categorized in one of the 1987 Standard Industrial Classification major group..."	x	
	1a	If no to 1, provide a written explanation (attached) to the EPD within 30 days.		
Exposure	2	Are site workers expected to be directly exposed to soils with chemical concentrations in excess of Type 4 RRS at this HSRA site in excess of 250 days per year?		x
	2a	If yes to 2, are these same site workers expected to be exposed to soils at this HSRA site in excess of 25 years throughout their career?		
Erosion	3	Is there evidence of soil erosion in the remedial areas of the site?		x
	3a	If yes to 3, is there evidence of erosion of these soils to off-site areas?		
	3b	If yes to 3a, are corrective measures being taken?		
	3c	If yes to 2, 3, 3a, and/or 3b, provide written explanation (attached) to the EPD within 30 days.		
Property Instruments	4	Do all leases or other property instruments for the site have the applicable deed notice language inserted into them.		N/A
	4a	If no to 4, provide a written explanation (attached) to the EPD within 30 days.		
Inspection	5	Date of inspection: 5 Mar 2014		
	5a	Name of inspector: Eric Haskell		
	5b	Photographs showing current land use (attached)	x	

Certification:

I certify under penalty of law that this document and all attachments were prepared under my direction or supervision in accordance with a system designed to assure that qualified personnel properly gather and evaluate the information submitted. Based on my inquiry of the person or persons who manage the system, or those persons directly responsible for gathering the information, the information submitted is, to the best of my knowledge and belief, true, accurate and complete. I am aware that there are significant penalties for submitting false information, including the possibility of fine and imprisonment for knowing violations.

Scott M. Hyatt
NAME (Please type or print)

Operations Project Manager
TITLE


SIGNATURE

1 April 2015
DATE

**SITE USE AND TYPE 4 SOIL RRS MONITORING
EVALUATION FORM**

J Strom Thurmond Lake Airstrip#1, HSI Site No. 10384


TYPE	No.	CRITERIA RESPONSE	YES	NO
Land Use	1	Does this HSRA site meet the definition of non-residential property as defined in HSRA Rule 391-3-19.02(2)? "Non-residential property means any property or portion of a property not currently being used for human habitation or for other purposes with a similar potential for human exposure, at which activities have been or are being conducted that can be categorized in one of the 1987 Standard Industrial Classification major group..."	x	
	1a	If no to 1, provide a written explanation (attached) to the EPD within 30 days.		
Exposure	2	Are site workers expected to be directly exposed to soils with chemical concentrations in excess of Type 4 RRS at this HSRA site in excess of 250 days per year?		x
	2a	If yes to 2, are these same site workers expected to be exposed to soils at this HSRA site in excess of 25 years throughout their career?		
Erosion	3	Is there evidence of soil erosion in the remedial areas of the site?		x
	3a	If yes to 3, is there evidence of erosion of these soils to off-site areas?		
	3b	If yes to 3a, are corrective measures being taken?		
	3c	If yes to 2, 3, 3a, and/or 3b, provide written explanation (attached) to the EPD within 30 days.		
Property Instruments	4	Do all leases or other property instruments for the site have the applicable deed notice language inserted into them.		N/A
	4a	If no to 4, provide a written explanation (attached) to the EPD within 30 days.		
Inspection	5	Date of inspection: 1 Apr 2015		
	5a	Name of inspector: Eric Haskell		
	5b	Photographs showing current land use (attached)	x	

Certification:

I certify under penalty of law that this document and all attachments were prepared under my direction or supervision in accordance with a system designed to assure that qualified personnel properly gather and evaluate the information submitted. Based on my inquiry of the person or persons who manage the system, or those persons directly responsible for gathering the information, the information submitted is, to the best of my knowledge and belief, true, accurate and complete. I am aware that there are significant penalties for submitting false information, including the possibility of fine and imprisonment for knowing violations.

Scott M. Hyatt
NAME (Please type or print)

Operations Project Manager
TITLE


SIGNATURE

1 April 2015
DATE

Appendix E

Memorandum of Agreement Between the U.S. Army Corps of Engineers, Savannah District and the U.S. Fish and Wildlife Service for Protected Species Surveys



RECEIVED

MAY 20 2010

DEPARTMENT OF THE ARMY
SAVANNAH DISTRICT, CORPS OF ENGINEERS
100 W. OGLETHORPE AVENUE
SAVANNAH, GEORGIA 31401-3640

RECEIVED ATHENS, GA
USFWS

MAY 20 2010

ATHENS, GA
USFWS

MEMORANDUM OF AGREEMENT
BETWEEN
THE U.S. ARMY CORPS OF ENGINEERS, SAVANNAH DISTRICT
AND
THE U.S. FISH AND WILDLIFE SERVICE

SUBJECT: Protected Species Surveys at J. Strom Thurmond, Richard B. Russell, and Hartwell Lakes

1. References. Memorandum of Agreement Between the U.S. Army Corps of Engineers, Savannah District (USACE) and the U.S. Fish and Wildlife Service Concerning Protected Species Surveys at J. Strom Thurmond, Richard B. Russell, and Hartwell Lakes, 1995; Section 7, Endangered Species Act of 1973 (ESA); Bald and Golden Eagle Protection Act of 1940.
2. Purpose. A revision of the 1995 Agreement referenced above is needed for clarification and to accommodate project needs regarding resurveys. The revision includes making protected species surveys valid for two years.
3. Problem. The USACE has constructed and operates Hartwell, J. Strom Thurmond, and Richard B. Russell Lakes as multipurpose water reservoirs for the production of hydroelectric power, flood control, navigation, fish and wildlife management, and recreational uses. The routine operations and maintenance of these lakes involves activities that may potentially affect federally-protected plant and animal species that might be present. Based on the 1995 Agreement, protected species surveys are valid for only one year; however, many activities require longer than one year to complete.
4. Scope. The USACE and the U.S. Fish and Wildlife Service (USFWS) agree that the operations and maintenance programs at these lakes will be administered in accordance with the following guidelines regarding the necessity for protected species surveys under Section 7 of the ESA and the Bald and Golden Eagle Protection Act of 1940. Execution and implementation of this Agreement evidences that the USACE has satisfied its Section 7 ESA and Bald and Golden Eagle Protection Act responsibilities for all individual undertakings of this program.
5. Responsibilities.
 - a. Protected Species. Using the federal listings for Georgia and South Carolina as provided by the USFWS, the USACE agrees to protection of all species listed as federal "Endangered or Threatened"; and that further, all candidate species, though not required to be protected by law, will be given consideration and reported when found.

SUBJECT: Protected Species Surveys at J. Strom Thurmond, Richard B. Russell, and Hartwell Lakes

b. Personnel Qualified for Surveying. Qualified personnel will include Savannah District Biologists or Park Rangers and contract biologists who are trained in protected species identification and qualified to conduct protected species surveys.

c. Major and Minor Surveys. Minor surveys are those involving five acres or less and can be conducted by trained Park Rangers as described below. Major surveys are those involving more than five acres or any areas thought to contain the preferred habitat of a protected species and will be conducted by biologists with experience in protected species surveys. Sites with southern pine beetle activity in excess of five acres may be surveyed by trained Park Rangers.

d. Park Ranger Training. By the terms of this agreement, Park Rangers conducting minor surveys will be trained to identify protected species occurring in the upper Savannah River basin. This training will minimally involve, but not be limited to, classroom instruction on the use of the USACE Protected Species Manual, field exercises, and guidance in completing survey work sheets. Training procedures will be periodically reviewed and altered as needed. Training will be conducted by the District Wildlife Biologist or a biologist with protected species survey experience. Refresher training will be provided as needed.

e. USACE Manual. The USACE Protected Species Manual for the Upper Savannah River Basin will be used as a reference for species identification at the three lake projects. The manual will be updated by the USACE District Wildlife Biologist as species lists are changed by the USFWS. Copies of the manual are available online and hard copies have been distributed to each lake office.

f. Protected Species Sites. All sites, as of the date of this agreement, known to support protected species will continue to be administered so as to protect these species in accordance with the ESA and the Bald and Golden Eagle Protection Act, including all additions and amendments thereto. Such sites are understood to include those which formerly supported documented species which currently may or may not be present, e.g. inactive bald eagle nests suitable for occupation. Any proposed modifications to a documented protected species site will require coordination with USFWS.

g. Resurveys – Seasonal. When suitable habitat is identified for a species and seasonal considerations prevent identification, resurveys will be conducted. Such resurveys will be done in accordance with instructions given in the USACE protected species manual and in consultation with the District Wildlife Biologist before a given activity commences.

h. Resurveys – New Activities. If activities are scheduled for a site more than two years after the initial survey, that site will be resurveyed for protected species.

SUBJECT: Protected Species Surveys at J. Strom Thurmond, Richard B. Russell, and Hartwell Lakes

i. Identified Species. If a species federally-listed as endangered, threatened or a candidate is identified on a site, USFWS will be notified and the locations provided through the District Wildlife Biologist. If the identified species may be affected by the proposed action, the USACE will enter consultation with USFWS.

j. Termination. Any party to this Agreement may terminate it by providing thirty (30) days notice to the other parties, provided that the parties will consult during the period prior to termination to seek agreement on amendments or other actions that would avoid termination. In the event of termination, the USACE will continue to comply with Section 7 of the ESA and the Bald and Golden Eagle Protection Act with regard to individual undertakings covered by this agreement.

k. Specific Project Activities. The USACE will ensure that protected species surveys are conducted in advance of any undertaking by the USACE or outgrantee that may impact protected species. The following table identifies commonly occurring activities which require or do not require protected species surveys.

ACTIVITY	SURVEY REQUIRED	SURVEY NOT REQUIRED
Forest Management:		
Thinning or regeneration timber harvest	X	
Reforestation/Site preparation		X
New access roads, skidder trails, or herbicide use outside the harvest area	X	
Firebreaks – Prescribed burns	X	
Firebreaks – Wildfires		X
Timber harvest for construction or for insect damage suppression	X	
Cut and leave for insect damage suppression		X
Hazardous tree/stump removal		X
Salvage of storm damaged timber		X
Facility Construction/Expansion including infrastructure or other land disturbing activities:		
In unmaintained or undisturbed areas	X	
In areas routinely mowed or maintained		X
Boundary Line Marking:		
		X
Shoreline Management:		
Rip-rap placement		X

SUBJECT: Protected Species Surveys at J. Strom Thurmond, Richard B. Russell, and Hartwell Lakes

ACTIVITY	SURVEY REQUIRED	SURVEY NOT REQUIRED
French drains, underbrushing/walkway		X
Boat dock placement including anchor system		X
Snag/hazardous tree removal		X
Underground utility/light poles		X
Changing Shoreline Management allocation to Limited Development	X	
Real Estate:		
Issuance of a new lease, license or easement	X	
Renewal of a lease, license or easement without changes to activities or footprint		X
Renewal of a lease, license, or easement with changes to activities or footprint	X	
Disposal of Government Real Property	X	

6. Effective date. This agreement will become effective as of the last date indicated below and will remain in effect until terminated.

Sandra Tucker
 FOR SANDRA TUCKER
 Field Supervisor
 U.S. Fish and Wildlife Service
 Athens, Georgia

Jeffrey M. Hall
 JEFFREY M. HALL
 Colonel, EN
 Commanding

12 Jul 2010
 Date

Date
Jay Herrington
 JAY HERRINGTON
 Field Supervisor
 U.S. Fish and Wildlife Service
 Charleston, South Carolina

June 8, 2010
 Date